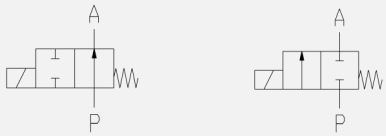



2/2-way solenoid valve - valve normally closed (NC)
- valve normally open (NO)

Solenoid valve for neutral, gaseous and liquid media

- For general purposes
- Pressure difference is required
- High life time
- Reliable and sturdy sealing elements
- Long-term availability of spare parts
- High-quality materials

TECHNICAL SPECIFICATIONS

Type of control:	Pilot operated, pressure difference is required	Supply voltage:	AC 50/60Hz 24V, 110V, 230V DC 0Hz 12V, 24V
Design:	Diaphragm design	Voltage tolerance:	-10% / +10%
Connection:	Flanged acc. to EN 1092-1 Form B1/B2 <i>Further connections on request</i>	Consumption:	A01 = 6.8 Watt E01 = 5.2 Watt A02 = 11 Watt E02 = 10 Watt A03 = 18 Watt
Installation:	Actuator preferable upright	Protection class:	IP 65 acc. to DIN 60529
Pressure:	0.3 - 20 bar (see table page 2)	Duty factor:	100% ED - VDE 0580
Medium:	Clean, neutral, liquid or gaseous	Connection type:	Plug, cable
Viscosity:	22 mm ² /s	Function:	NC NO
Temperature range:	Medium: -10 °C up to +80 °C Ambient: -10 °C up to +50 °C		
Body material	Cast iron EN-GJL-250 Cast steel GP240 GH Stainless steel 1.4581 (AISI 316Ti)	Certificates:	
Metallic inner parts:	Brass and stainless steel	Ex-proof:	acc. to directive 2014/34/EG (ATEX)
Sealing:	NBR, FKM, EPDM		

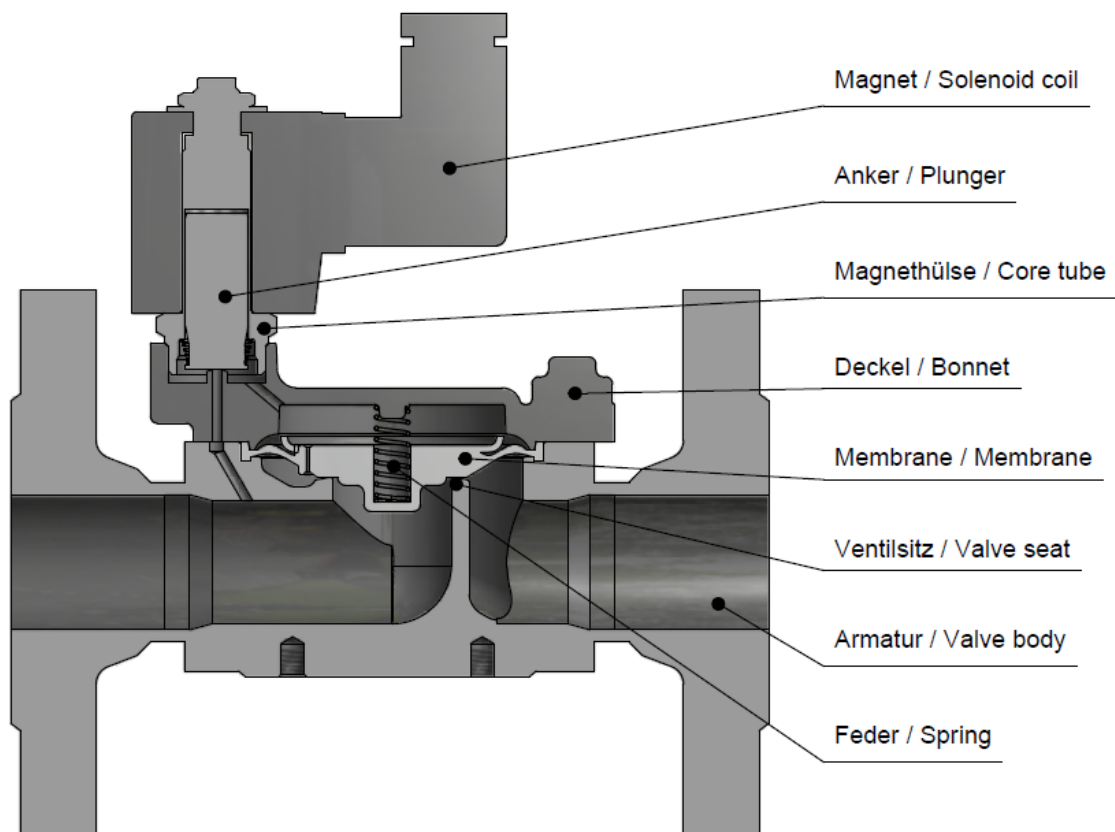
ORDERING SYSTEM

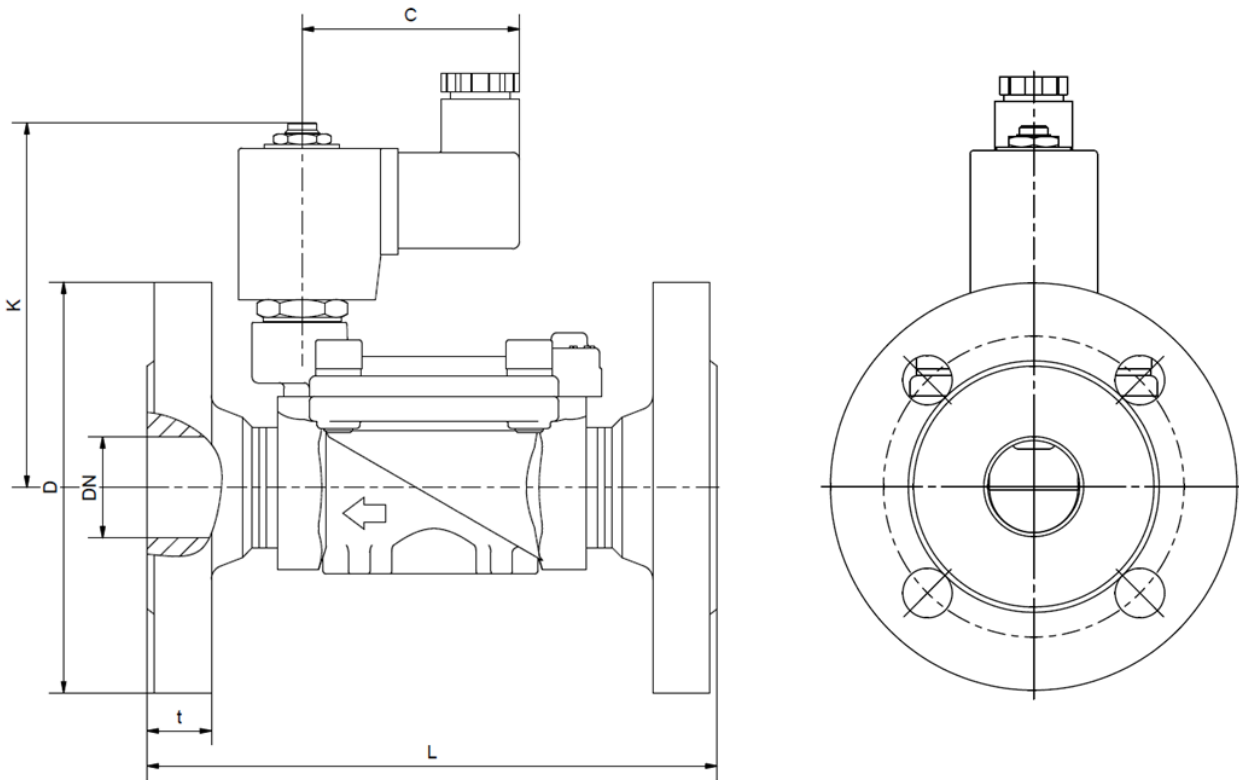
M-DS	2	02	D	L	25.0	E	A	A02	NO
Type	Control type	Code	Connection type	Connection size	Nominal diameter mm	Body material	Sealing material	Actuator type	Option
	2 pilot operated		D PN16 X PN40 A ANSI150 Y ANSI300	J DN15 K DN20 L DN25 M DN32 N DN40 O DN50		C AISI316 E Cast Iron F Cast St.	A NBR B FKM C EPDM	A standard E ex.-proof	

Standard NC type	Seat \varnothing mm	Kv-value m ³ /h	max. pressure			max. pressure ATEX		
			A01	A02	A03-NO	E01	E02	E02-NO
M-DS 202 DJ	15	3.9	0.3-16	0.3-20	0.3-20	0.3-10	0.3-20	0.3-16
M-DS 202 DK	20	10.8	0.3-16	0.3-20	0.3-20	0.3-10	0.3-20	0.3-16
M-DS 202 DL	25	13.0	0.3-16	0.3-20	0.3-20	0.3-10	0.3-20	0.3-16
M-DS 202 DM	32	30.0	-	0.5-16	0.5-16	-	0.5-16	0.5-13
M-DS 202 DN	40	32.0	-	0.5-16	0.5-16	-	0.5-16	0.5-13
M-DS 202 DO	50	45.0	-	0.5-16	0.5-16	-	0.5-16	0.5-13

The flow rate mentioned in the table applies to the strongest coil.
 Pressure rating for EN-GJL-250 max. 16 bar.

Valve design





Coil	A01 / A02 / A03-NO / E01 / E02					
Type	M-DS 202					
	DJ	DK	DL	DM	DN	DO
DN	15	20	25	32	40	50
C	61	61	61	61	61	61
K	97	105	105	120	120	230
L	130	150	160	180	200	230
t	16	18	18	18	18	20
kg	2.3	3.3	3.8	6.5	7.0	9.5

Differing dimension „C“ for ATEX-coils

- The **GVT** logo is a registered trademark.
- Note: All texts and images are the property of **GVT** and must not be replicated or modified, not even in part, without written approval.
- Original products may differ from the product images shown, due to different materials and the like.
- Subject to error and changes.