



Technical Data Sheet M-DS 301



2/2-way solenoid valve - valve normally closed (NC)
- valve normally open (NO)

Solenoid valve for clean, neutral, gaseous and liquid media

- For general purposes
- No pressure difference necessary
- High life time
- Reliable and sturdy sealing elements
- Long-term availability of spare parts
- High-quality materials

TECHNICAL SPECIFICATIONS

Type of control:	Force-pilot operated, no pressure difference necessary
Design:	Diaphragm design
Connection:	Threaded G 1/4 - G 2 DIN ISO 228 (BSP) <i>Further connections on request</i>
Installation:	Actuator upright
Pressure:	0 - 16 bar
Medium:	Clean, neutral, liquid or gaseous
Viscosity:	22 mm ² /s
Temperature range:	Medium: -10 °C up to +80 °C Ambient: -10 °C up to +50 °C
Body material	Brass 2.0402 Stainless steel 1.4581 (AISI 316Ti)
Metallic inner parts:	Brass and stainless steel
Sealing:	NBR, FKM, EPDM

Supply voltage:	AC 50/60Hz 24V, 110V, 230V DC 0Hz 12V, 24V
Voltage tolerance:	-10% / +10%
Consumption:	A02 = 11 Watt E02 = 10 Watt A03 = 18 Watt A04 = 25 Watt A05 = 24 Watt E05 = 24 Watt A06 = 30 Watt E06 = 24 Watt A07 = 46 Watt E07 = 30 Watt A08 = 100 Watt E08 = 47 Watt
Protection class:	IP 65 acc. to DIN 60529
Duty factor:	100% ED - VDE 0580
Connection type:	Plug / Terminal box / 3m cable
Funktion:	<div style="display: flex; justify-content: space-around;"> <div style="text-align: center;"> <p>NC</p> </div> <div style="text-align: center;"> <p>NO</p> </div> </div>
Certificates:	

Ex-proof: acc. to directive 2014/34/EG (ATEX)

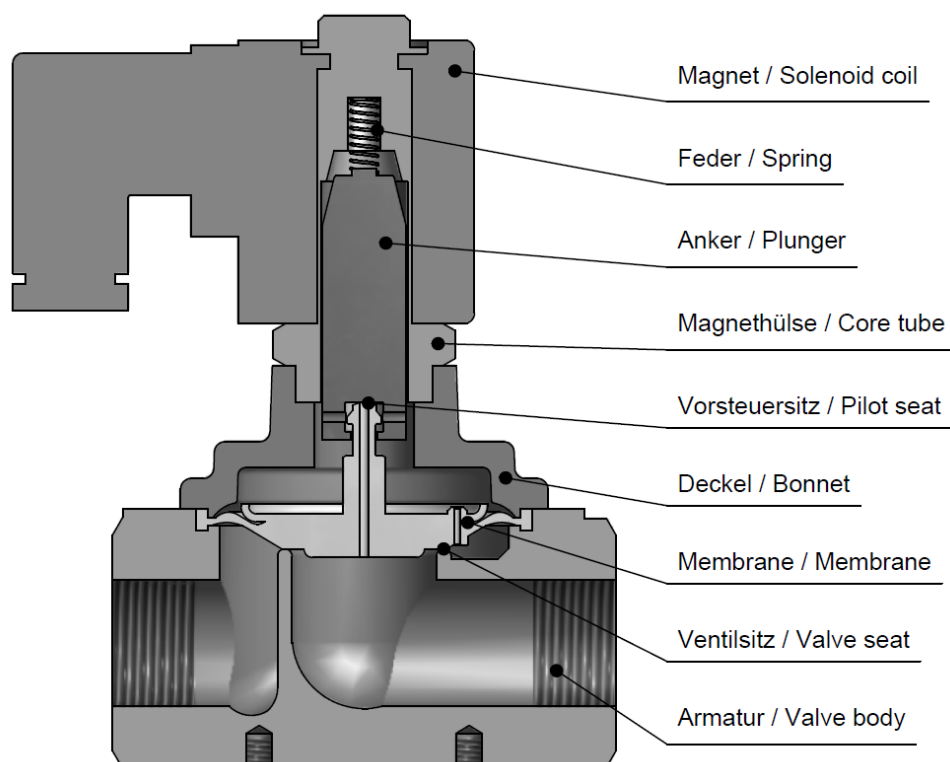
ORDERING SYSTEM

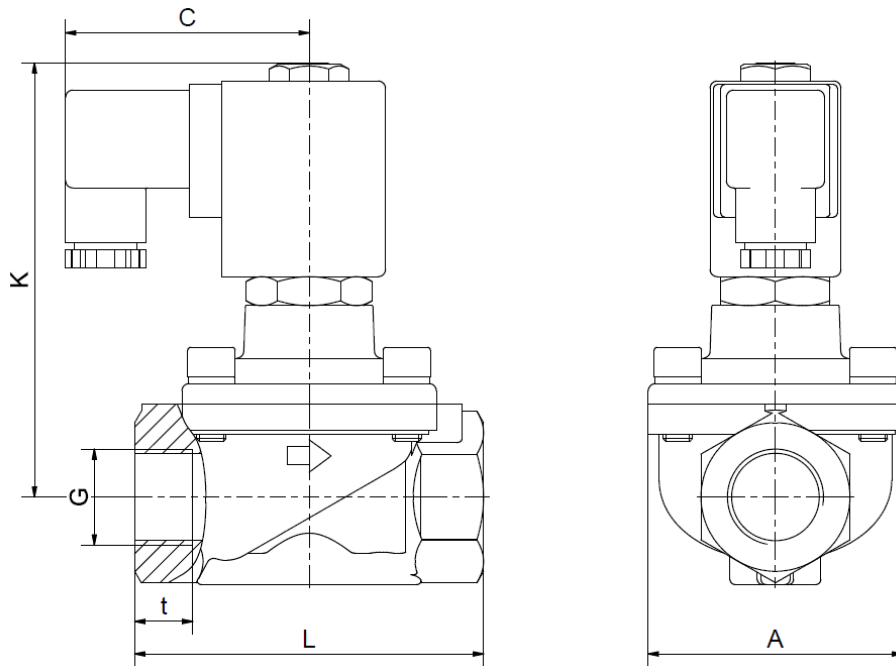
M-DS	3	01	G	D	13.5	A	A	A04	NO
Type	Control type	Code	Connection type	Connection size	Nominal diameter mm	Body material	Sealing material	Actuator type	Option
	3 force-pilot oper.		G BSP N NPT	B 1/4 C 3/8 D 1/2 E 3/4 F 1 G 1 1/4 H 1 1/2 I 2		A Brass C AISI316	A NBR B FKM C EPDM	A standard E ex.-proof	

Standard NC type	Seat ø mm	Kv-value	max. pressure					
			A02	A03	A04	A06	A07	A08
M-DS 301 GB	13.5	1.8	0-10	0-16	0-16	-	-	-
M-DS 301 GC	13.5	3.6	0-10	0-16	0-16	-	-	-
M-DS 301 GD	13.5	3.9	0-10	0-16	0-16	-	-	-
M-DS 301 GE	27.5	10.8	0-6	0-10	0-16	-	-	-
M-DS 301 GF	27.5	13.0	0-6	0-10	0-16	-	-	-
M-DS 301 GG	40.0	22.0	-	-	-	0-10	0-16	0-16
M-DS 301 GH	40.0	25.0	-	-	-	0-10	0-16	0-16
M-DS 301 GI	50.0	30.0	-	-	-	0-6	0-16	0-16

Standard NC type	Seat ø mm	Kv-value	max. pressure with ATEX coil				
			E02	E05	E06	E07	E08
M-DS 301 GB	13.5	1.8	0-10	0-16	-	-	-
M-DS 301 GC	13.5	3.6	0-10	0-16	-	-	-
M-DS 301 GD	13.5	3.9	0-10	0-16	-	-	-
M-DS 301 GE	27.5	10.8	0-5	0-16	-	-	-
M-DS 301 GF	27.5	13.0	0-5	0-16	-	-	-
M-DS 301 GG	40.0	22.0	-	-	0-3	0-10	0-16
M-DS 301 GH	40.0	25.0	-	-	0-3	0-10	0-16
M-DS 301 GI	50.0	30.0	-	-	0-3	0-6	0-16

Valve design





Coil	A02 / A03 / E02					A04 / E05				
	M-DS 301					M-DS 301				
Type	GB	GC	GD	GE	GF	GB	GC	GD	GE	GF
G	1/4	3/8	1/2	3/4	1	1/4	3/8	1/2	3/4	1
A	48	48	48	70	70	48	48	48	70	70
C	61	61	61	61	61	67	67	67	67	67
K	86	86	86	96	96	104	104	104	120	120
L	67	67	67	96	96	67	67	67	96	96
t	12	12	13	16	16	12	12	13	16	16
kg	0.85	0.8	0.8	1.5	1.4	1.1	1.1	1.0	1.8	1.7

Different dimensions „C“ for ATEX-coils

Coil	A06 / E06			A07 / E07			A08 / E08		
	M-DS 301			M-DS 301			M-DS 301		
Type	GG	GH	GI	GG	GH	GI	GG	GH	GI
G	1 1/4	1 1/2	2	1 1/4	1 1/2	2	1 1/4	1 1/2	2
A	96	96	112	96	96	112	96	96	112
C	77	77	77	93	93	93	107	107	107
K	173	173	179	196	196	205	243	243	251
L	140	140	168	140	140	168	140	140	168
t	22	22	25	22	22	25	22	22	25
kg	4.8	4.5	5.8	6.2	5.9	7.2	10.2	9.9	11.3

Different dimensions „C“ for ATEX-coils

- The GVT logo is a registered trademark.
- Note: All texts and images are the property of GVT and must not be replicated or modified, not even in part, without written approval.
- Original products may differ from the product images shown, due to different materials and the like.
- Subject to error and changes.