



Technical Data Sheet M-HD 202

GVT.

2/2-way solenoid valve - valve normally closed (NC)
- valve normally open (NO)

Solenoid valve for high pressure liquids or gases

- For high pressure applications up to 900 bar
- Pressure difference is required
- High life time
- Reliable and sturdy sealing elements
- Long-term availability of spare parts
- High-quality materials

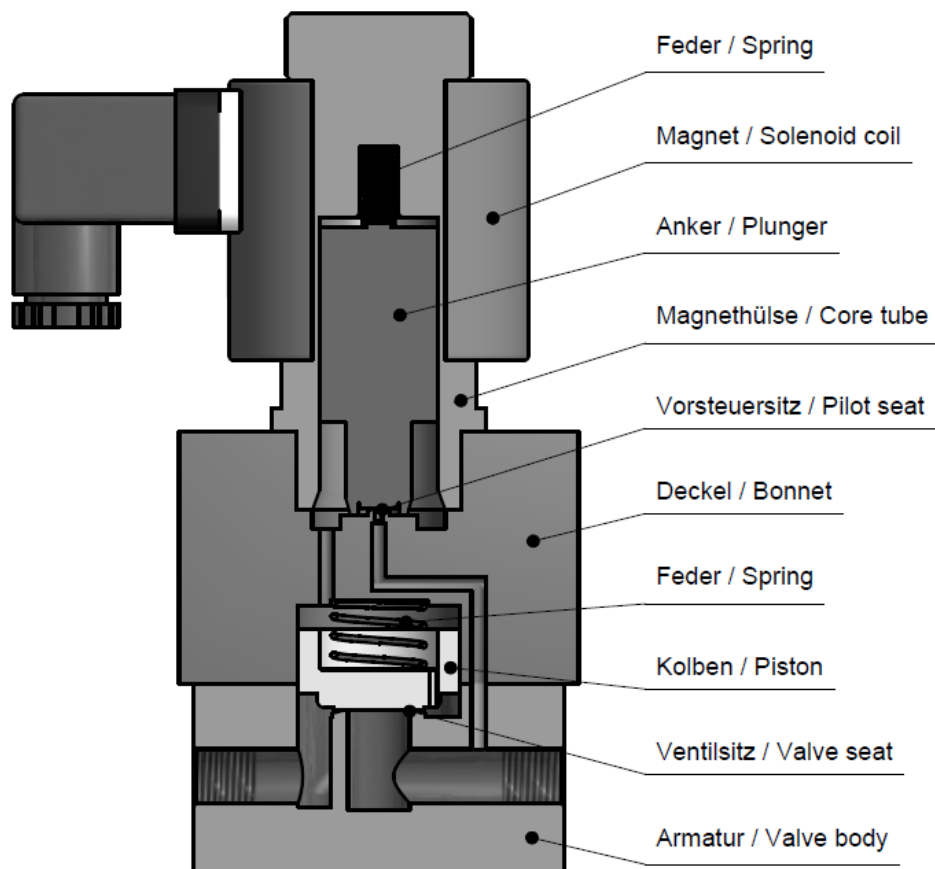
TECHNICAL SPECIFICATIONS

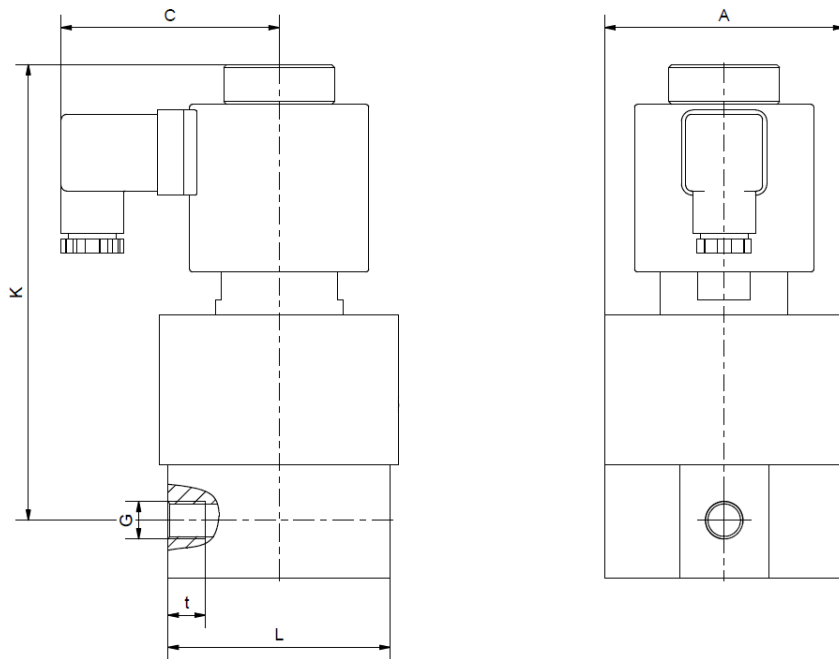
Type of control:	Pilot operated, pressure difference requ.	Supply voltage:	AC 50/60Hz 24V, 110V, 230V DC 0Hz 12V, 24V
Design:	piston design	Voltage tolerance:	-10% / +10%
Connection:	threaded G 1/4 - G 2 DIN ISO 228 (BSP) <i>Further connections on request</i>	Consumption:	A05 = 24 Watt E04 = 23 Watt A06 = 30 Watt E06 = 24 Watt A07 = 46 Watt E07 = 30 Watt
Installation:	Actuator preferable upright	Protection class:	IP 65 acc. to DIN 60529
Pressure:	1 - 450 bar	Duty factor:	100% ED - VDE 0580
Medium:	clean, neutral, liquid or gaseous	Connection type:	Plug / Terminal box
Viscosity:	22 mm ² /s	Funktion:	NC NO
Temperature range:	Medium: -40 °C up to +80 °C Ambient: -40 °C up to +50 °C	Certificates:	
Body material	Stainless steel 1.4581 (AISI 316Ti)	Ex-proof:	acc. to 2014/34/EG (ATEX)
Metallic inner parts:	Stainless steel		
Sealing:	PTFE		

ORDERING SYSTEM

M-HD	2	02	G	D	12.0	C	D	A06	NO
Type	Control type	Code	Connection type	Connection size	Nominal diameter mm	Body material	Sealing material	Actuator type	Option
	2 pilot operat.		G BSP N NPT	B 1/4 C 3/8 D 1/2 E 3/4 F 1 G 1 1/4 H 1 1/2 I 2		C AISI316	D PTFE	A standard E ex.-proof	

Standard NC type	Seat \varnothing mm	Kv-value m^3/h	max. pressure			max. pressure ATEX		
			A05	A06	A07	E04	E06	E07
M-HD 202 GB	12.0	1.8	1 - 150	1 - 300	1 - 450	1 - 150	1 - 250	1 - 350
M-HD 202 GC	12.0	3.3	1 - 150	1 - 300	1 - 450	1 - 150	1 - 250	1 - 350
M-HD 202 GD	12.0	3.8	1 - 150	1 - 300	1 - 450	1 - 150	1 - 250	1 - 350
M-HD 202 GE	25.0	11.5	1 - 150	1 - 220	1 - 450	1 - 150	1 - 220	1 - 350
M-HD 202 GF	25.0	13.0	1 - 150	1 - 220	1 - 450	1 - 150	1 - 220	1 - 350
M-HD 202 GG	40.0	22.0	-	-	1 - 330	-	-	1 - 250
M-HD 202 GH	40.0	24.0	-	-	1 - 330	-	-	1 - 250
M-HD 202 GI	50.0	32.0	-	-	1 - 330	-	-	1 - 250





Coil Type	A05 / E04					A06 / E06				
	M-HD 202 GB	M-HD 202 GC	M-HD 202 GD	M-HD 202 GE	M-HD 202 GF	M-HD 202 GB	M-HD 202 GC	M-HD 202 GD	M-HD 202 GE	M-HD 202 GF
G	1/4	3/8	1/2	3/4	1	1/4	3/8	1/2	3/4	1
A	84	84	84	110	110	84	84	84	110	110
C	70	70	70	70	70	77	77	77	77	77
K	143,5	143,5	151,5	159	159	161	161	161	176	176
L	78	78	78	101	101	78	78	78	101	101
t	13	13	15	16	18	13	13	15	16	18
kg	3,8	3,8	4,0	6,6	6,4	5,2	5,2	5,2	7,8	7,7

Coil Type	A07 / E07							
	M-HD 202 GB	M-HD 202 GC	M-HD 202 GD	M-HD 202 GE	M-HD 202 GF	M-HD 202 GG	M-HD 202 GH	M-HD 202 GI
G	1/4	3/8	1/2	3/4	1	1 1/4	1 1/2	2
A	84	84	84	110	110	155	155	170
C	92,5	92,5	92,5	92,5	92,5	92,5	92,5	92,5
K	181,5	181,5	181,5	200	200	228	228	242
L	78	78	78	101	101	140	140	155
t	13	13	15	16	18	22	22	27
kg	6,7	6,6	6,6	9,3	9,3	18,8	18,6	24,6

- The GVT logo is a registered trademark.
- Note: All texts and images are the property of GVT and must not be replicated or modified, not even in part, without written approval.
- Original products may differ from the product images shown, due to different materials and the like.
- Subject to error and changes.