



Technical Data Sheet M-PS 202

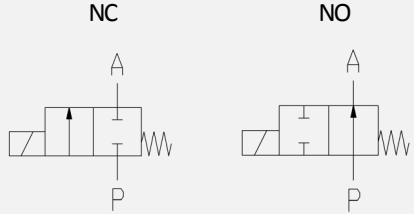



2/2-way solenoid valve - valve normally closed (NC)
- valve normally open (NO)

Solenoid valve for clean, neutral, gaseous and liquid media

- For general purposes
- Pressure difference is required
- High life time
- Reliable and sturdy sealing elements
- Long-term availability of spare parts
- High-quality materials

TECHNICAL SPECIFICATIONS

Type of control:	Pilot operated, pressure difference requ.	Supply voltage:	AC 50/60Hz 24V, 110V, 230V DC 0Hz 12V, 24V
Design:	Piston design	Voltage tolerance:	-10% / +10%
Connection:	Flanged acc. to EN 1092-1 Form B1/B2 <i>Other flanged connections like ASME on request</i>	Consumption:	A01 = 6.8 Watt E01 = 5.2 Watt A02 = 11 Watt E02 = 10 Watt A03 = 18 Watt
Installation:	Actuator preferable upright	Protection class:	IP 65 acc. to DIN 60529
Pressure:	0.5 - 40 bar (see table page 2)	Duty factor:	100% ED - VDE 0580
Medium:	clean, neutral, liquid or gaseous	Connection type:	Plug / 3m cable
Viscosity:	22 mm ² /s	Funktion:	NC NO 
Temperature range:	Medium: -20 °C up to +80 °C Ambient: -20 °C up to +50 °C	Certificates:	
Body material	Cast iron EN-GJL-250 Cast steel GP240 GH Stainless steel 1.4581 (AISI 316Ti)	Ex-proof:	acc. to directive 2014/34/EG (ATEX)
Metallic inner parts:	Brass and Stainless steel		
Sealing:	NBR, FKM, PTFE, EPDM		

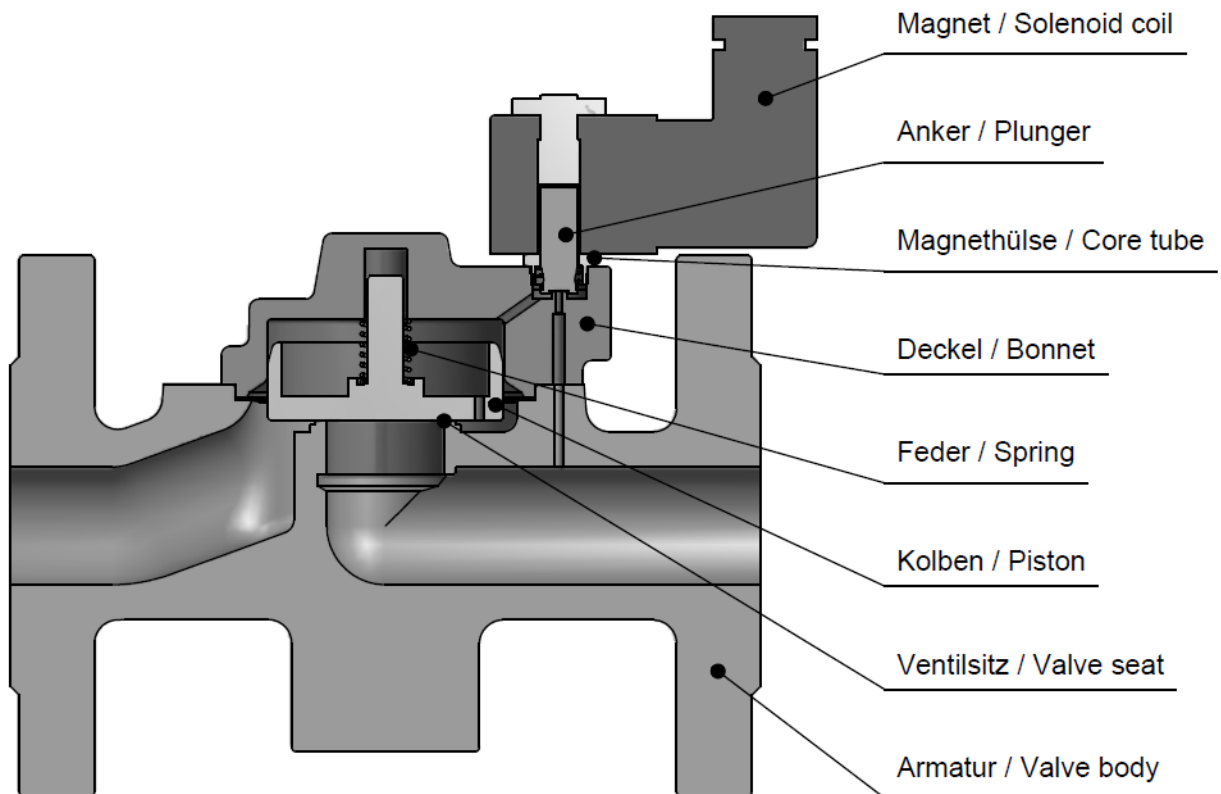
ORDERING SYSTEM

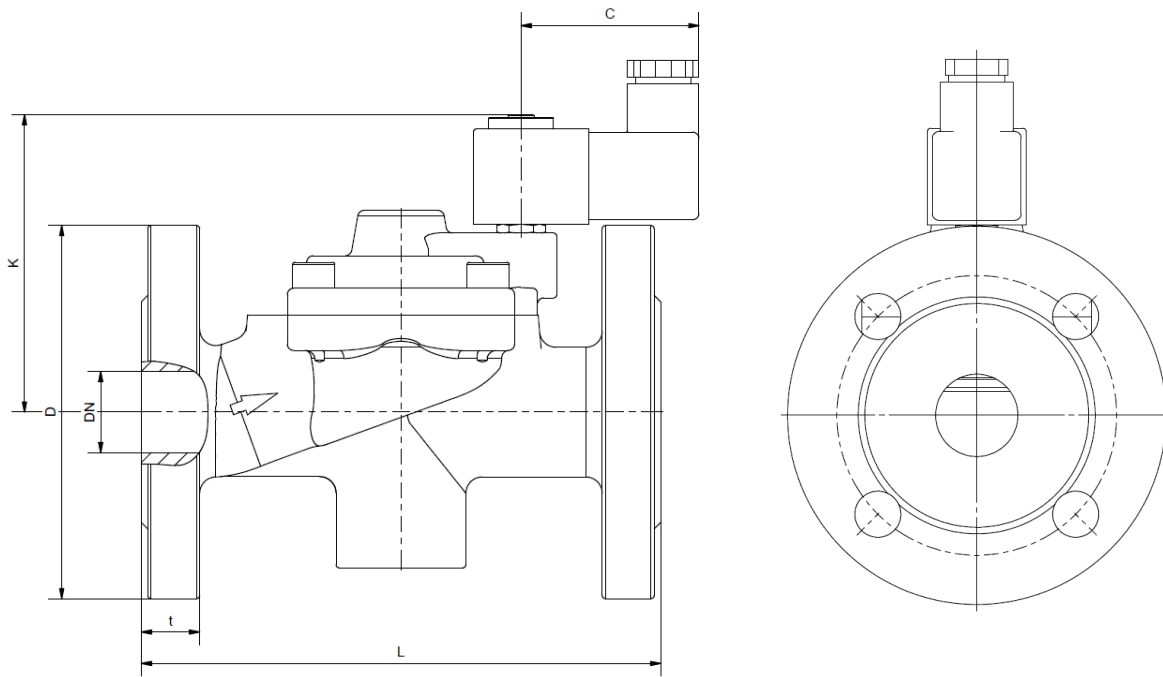
M-PS	2	02	D	L	25.0	E	A	A01
Type	Control type	Code	Connection type	Connection size	Nominal diameter mm	Body material	Sealing material	Actuator type
	2 pilot operat.		D PN16 X PN40 A ANSI150 Y ANSI300	J DN15 K DN20 L DN25 M DN32 N DN40 O DN50		C AISI316 E EN-GJL-250 F GP240 GH	A NBR B FKM C EPDM D PTFE	A standard E ex.-proof

Standard NC type	Seat ø mm	Kv-value m ³ /h	max. pressure			max. pressure ATEX		
			A01	A02*	A03-NO	E01	E02	E02-NO
M-PS 202 X(D)J	15.0	5.0	0.5-40	0.5-40	0.5-40	0.5-12	0.5-40	0.5-25
M-PS 202 X(D)K	20.0	11.0	0.5-40	0.5-40	0.5-40	0.5-12	0.5-40	0.5-20
M-PS 202 X(D)L	25.0	13.0	0.5-40	0.5-40	0.5-40	0.5-12	0.5-40	0.5-20
M-PS 202 X(D)M	32.0	28.0	-	0.5-40	0.5-16	-	0.5-40	0.5-13
M-PS 202 X(D)N	40.0	30.0	-	0.5-40	0.5-16	-	0.5-40	0.5-13
M-PS 202 X(D)O	50.0	46.0	-	0.5-40	0.5-16	-	0.5-40	0.5-13

The flow rate mentioned in the table applies to the * marked coil
 Max. pressure for EN-GJL-250 housing with PN16 is 16 bar

Valve design





Coil	A01 / E01			A02 / A03 / E02					
	M-PS 202 ?J	M-PS 202 ?K	M-PS 202 ?L	M-PS 202 ?J	M-PS 202 ?K	M-PS 202 ?L	M-PS 202 ?M	M-PS 202 ?N	M-PS 202 ?O
DN	15	20	25	15	20	25	32	40	50
C	55	55	55	59	59	59	59	59	59
K	80	92	92	91	106	106	139	139	152
L	130	150	160	130	150	160	180	200	230
kg	2.5	3.6	4.2	2.5	3.6	4.2	7.0	7.5	10.5

Differing dimensions „C“ for ATEX-coils

- The **GVT** logo is a registered trademark.
- Note: All texts and images are the property of **GVT** and must not be replicated or modified, not even in part, without written approval.
- Original products may differ from the product images shown, due to different materials and the like.
- Subject to error and changes.