



3/2-Way pressure controlled valve - universal

Pressure controlled valve for high pressure applications

- For high pressure applications up to 50 MPa
- No pressure difference is required
- High life time
- Simple compact valve design
- Reliable and sturdy sealing elements
- Long-term availability of spare parts
- High-quality materials

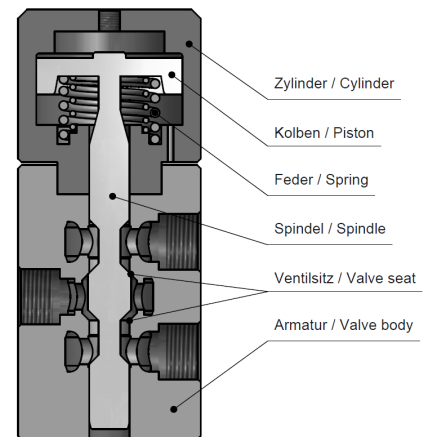
TECHNICAL SPECIFICATIONS

Type of control:	direct acting, pressure controlled	Supply voltage:	-
Design:	piston design	Voltage tolerance:	-
Connection:	threaded G 1/4 - G 1 DIN ISO 228 (BSP)	Consumption:	-
Installation:	actuator preferable upright	Protection class:	-
Pressure:	0-500 bar (see table page 2)	Duty factor:	-
Medium:	clean, neutral, gaseous and liquid	Connection type:	-
Viscosity:	22 mm ² /s	Funktion:	<div style="display: flex; justify-content: space-around;"> <div style="text-align: center;"> <p>NC</p> </div> <div style="text-align: center;"> <p>NO</p> </div> </div>
Temperature range:	Medium: -10 °C up to +80 °C Ambient: -10 °C up to +60 °C	Certificates:	
Body material	Stainless steel 1.4571 (AISI 316 Ti)	Ex-proof:	optional with mech. ATEX
Metallic inner parts:	Stainless steel		
Sealing:	PTFE		
Pilot pressure:	4 - 10 bar		
Pilot medium:	clean and neutral gases		

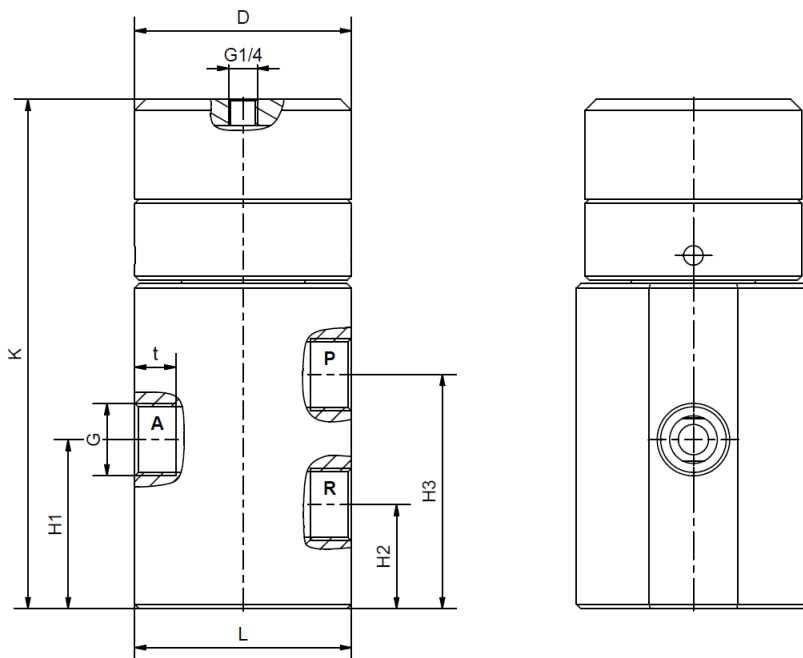
ORDERING SYSTEM

P-HD	1	02	G	D	10.0	C	D	P05	
Type	Control type	Code	Connection type	Connection size	Nominal diameter mm	Body material	Sealing material	Actuator type	Option
	1 direct acting		G BSP N NPT S Special	B 1/4 C 3/8 D 1/2 E 3/4 F 1		C AISI316	D PTFE		

Standard type	Seat \varnothing mm	Kv-value m ³ /h	max. pressure [bar]	
			P05	P08
P-HD 102 GB	10.0	1.0	0-320	0-500
P-HD 102 GC	10.0	1.0	0-320	0-500
P-HD 102 GD	10.0	1.2	0-320	0-500
P-HD 102 GE	22.0	7.0	0-100	0-350
P-HD 102 GF	22.0	8.0	0-100	0-350



Dimensions



Actuator Type	P05 (P08)				
	P-HD 102 GB	P-HD 102 GC	P-HD 102 GD	P-HD 102 GE	P-HD 102 GF
G	1/4	3/8	1/2	3/4	1
D	78 (100)	78 (100)	78 (100)	78 (100)	78 (100)
H1	52,5	52,5	52,5	78	78
H2	32,5	32,5	32,5	48	48
H3	72,5	72,5	72,5	108	108
K	188 (197)	188 (197)	188 (197)	230 (235)	230 (235)
L	70	70	70	100	100
t	12,5	12,5	14,5	17	19
kg	6 (7,9)	6 (7,9)	6 (7,9)	11,8 (13,2)	11,8 (13,2)

- The **GVT** logo is a registered trademark.
- Note: All texts and images are the property of **GVT** and must not be replicated or modified, not even in part, without written approval.
- Original products may differ from the product images shown, due to different materials and the like.
- Subject to error and changes.