

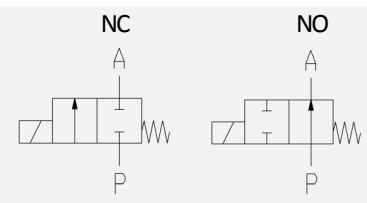



## 2/2-Way pressure controlled valve - valve normally closed (NC)

### Pressure controlled valve for cryogenic fluids

- For cryogenic media to -196 °C (incl. LNG)
- No pressure difference necessary
- High life time
- Simple compact valve design
- Reliable and sturdy sealing elements
- Long-term availability of spare parts
- High-quality materials

## TECHNICAL SPECIFICATIONS

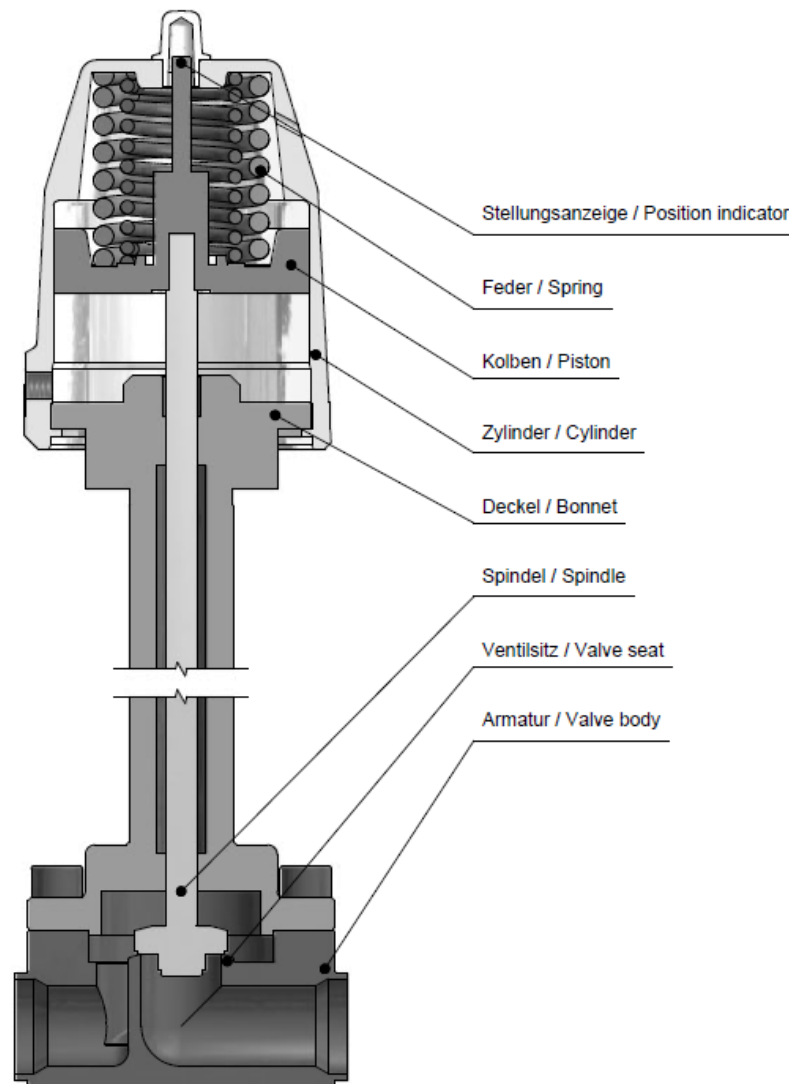
|                       |   |                    |   |
|-----------------------|---|--------------------|---|
| Type of control:      | Direct acting, pressure controlled  | Supply voltage:    | -   |
| Design:               | Poppet design   | Voltage tolerance: | -   |
| Connection:           | Threaded G 1/4 - G 2 DIN ISO 228 (BSP)<br>Welding ends, NPT on request<br>Further connections like flanges acc. to EN 1092 are available on request | Consumption:       | -   |
| Installation:         | Actuator upright  | Protection class:  | -   |
| Pressure:             | 0-16 bar and 0-40 bar (see table page 2)  | Duty factor:       | -   |
| Medium:               | Clean, neutral, gaseous and liquid  | Connection type:   | -   |
| Viscosity:            | 600 mm <sup>2</sup> /s  | Funktion:          |   |
| Temperature range:    | Medium: -196 °C up to +60 °C<br>Ambient: -10 °C up to +60 °C  | Certificates:      |  |
| Body material         | PN16: Stainless steel 1.4581 (AISI316Ti)<br>PN50: Stainless steel 1.4404 (AISI 316L)  | Ex-proof:          | optional with mech. ATEX  |
| Metallic inner parts: | Stainless steel   |                    |   |
| Sealing:              | PCTFE   |                    |   |
| Pilot pressure:       | 4-10 bar  |                    |   |
| Pilot medium:         | clean and neutral gases   |                    |   |

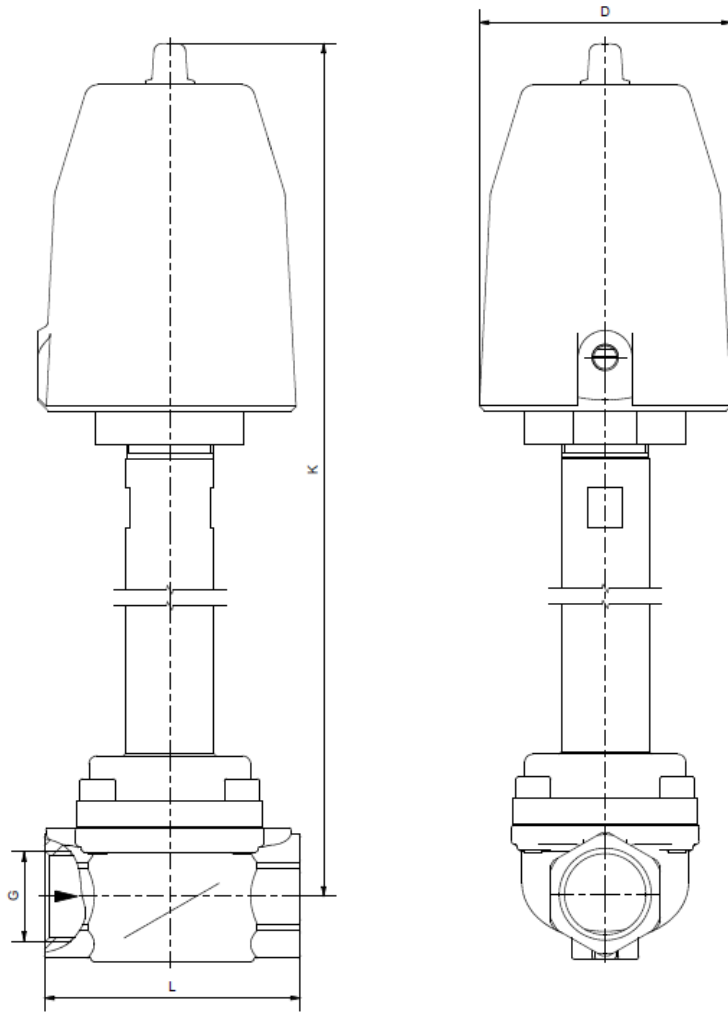
## ORDERING SYSTEM

| P-LT | 1               | 01   | G               | D               | 13.5                | C             | E                | P05           |
|------|-----------------|------|-----------------|-----------------|---------------------|---------------|------------------|---------------|
| Type | Control type    | Code | Connection type | Connection size | Nominal diameter mm | Body material | Sealing material | Actuator type |
|      | 1 direct acting |      | G BSP           | B 1/4           |                     | C AISI316Ti   | E PEEK           | 05 50 mm      |
|      |                 |      | N NPT           | C 3/8           |                     | D AISI316L    |                  | 08 80 mm      |
|      |                 |      | D PN15          | D 1/2           | J DN15              |               |                  | 13 125 mm     |
|      |                 |      | X PN40          | E 3/4           | K DN20              |               |                  |               |
|      |                 |      | A ANSI150       | F 1             | L DN25              |               |                  |               |
|      |                 |      | Y ANSI300       | G 1 1/4         | M DN32              |               |                  |               |
|      |                 |      | S Special       | H 1 1/2         | N DN40              |               |                  |               |
|      |                 |      |                 | I 2             | O DN50              |               |                  |               |

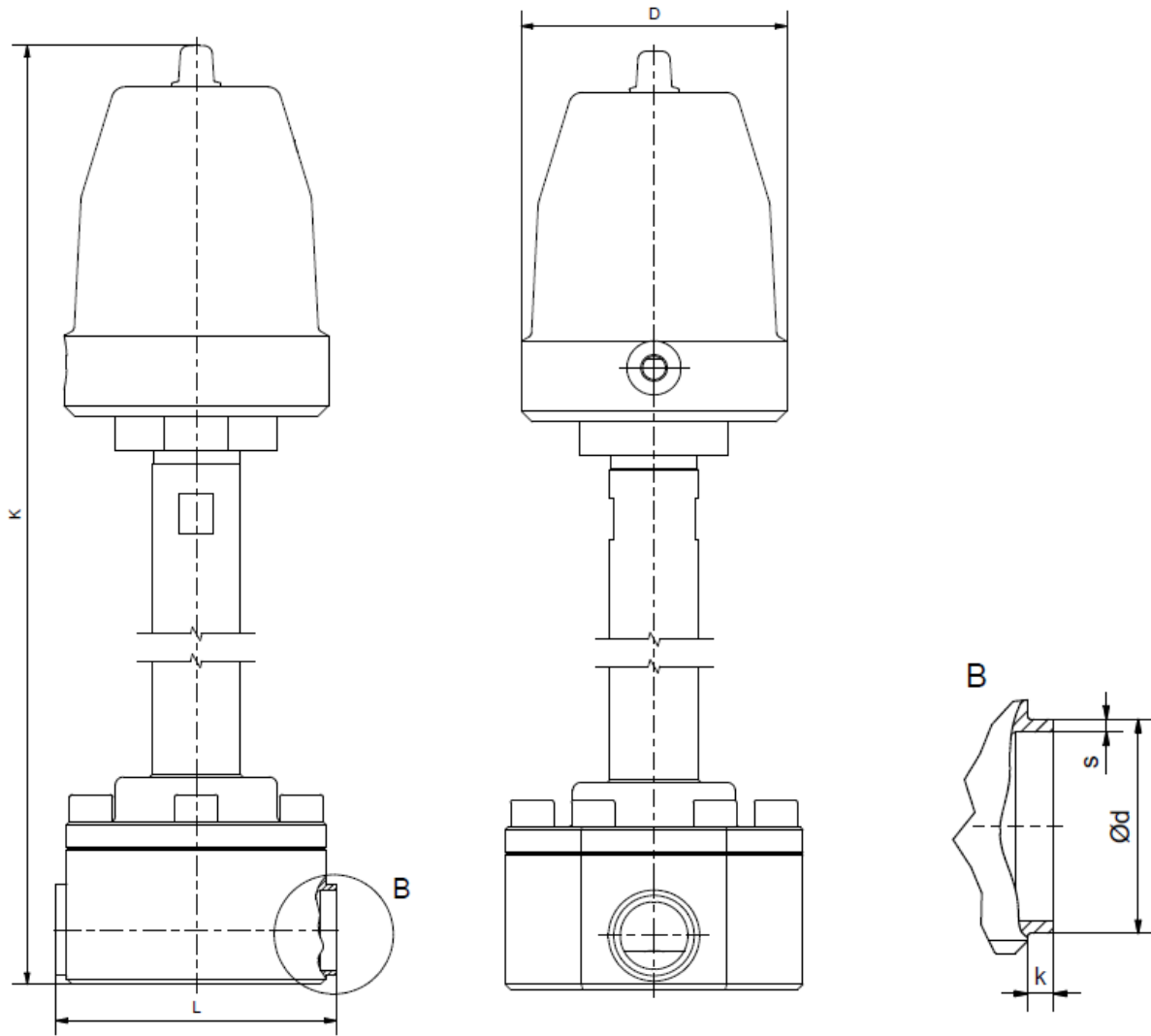
| Standard NC type | Seat $\varnothing$ mm | Kv-value<br>$\text{m}^3/\text{h}$ | PN16<br>max. pressure with actuator |      |      | PN40<br>max. pressure with actuator |      |      |
|------------------|-----------------------|-----------------------------------|-------------------------------------|------|------|-------------------------------------|------|------|
|                  |                       |                                   | P05                                 | P08  | P13  | P05                                 | P08  | P13  |
| P-LT 101 ?B      | 13.5                  | 1.9                               | 0-16                                | -    | -    | -                                   | -    | -    |
| P-LT 101 ?C      | 13.5                  | 4.0                               | 0-16                                | -    | -    | -                                   | -    | -    |
| P-LT 101 ?D(J)   | 13.5                  | 4.7                               | 0-16                                | -    | -    | 0-25                                | 0-40 | -    |
| P-LT 101 ?E(K)   | 25.0                  | 11.9                              | 0-16                                | -    | -    | -                                   | 0-25 | 0-40 |
| P-LT 101 ?F(L)   | 25.0                  | 13.3                              | 0-8                                 | 0-16 | -    | -                                   | 0-25 | 0-40 |
| P-LT 101 ?G(M)   | 40.0                  | 30.0                              | -                                   | 0-8  | 0-16 | -                                   | 0-25 | 0-40 |
| P-LT 101 ?H(N)   | 40.0                  | 35.0                              | -                                   | 0-8  | 0-16 | -                                   | 0-16 | 0-40 |
| P-LT 101 ?I(O)   | 50.0                  | 49.0                              | -                                   | -    | 0-16 | -                                   | -    | 0-40 |

## Valve design





| Actuator | P05 |     |          |     |     | P08 |     |       |       | P13   |          |      |
|----------|-----|-----|----------|-----|-----|-----|-----|-------|-------|-------|----------|------|
| Type     | GB  | GC  | P-LT 101 |     |     | GE  | GF  | GG    | GH    | GG    | P-LT 101 |      |
|          |     |     | GD       | GE  | GF  |     |     |       |       |       | GH       | GI   |
| G        | 1/4 | 3/8 | 1/2      | 3/4 | 1   | 3/4 | 1   | 1 1/4 | 1 1/2 | 1 1/4 | 1 1/2    | 2    |
| K        | 400 | 400 | 400      | 410 | 410 | 440 | 440 | 470   | 470   | 535   | 535      | 545  |
| L        | 67  | 67  | 67       | 96  | 96  | 96  | 96  | 140   | 140   | 140   | 140      | 168  |
| D        | 62  | 62  | 62       | 62  | 62  | 94  | 94  | 94    | 94    | 145   | 145      | 145  |
| kg       | 5.3 | 5.3 | 5.3      | 5.5 | 5.7 | 7.5 | 7.5 | 9.0   | 9.0   | 13.0  | 13.0     | 15.0 |



| Actuator | P05            | P08  |      |      |      | P13  |      |          |      |      |
|----------|----------------|------|------|------|------|------|------|----------|------|------|
| Type     | P-LT 101<br>SD | SE   | SF   | SG   | SH   | SE   | SF   | P-LT 101 |      |      |
|          |                |      |      |      |      |      |      | SG       | SH   | SI   |
| DN       | 13.5           | 25.0 | 27.5 | 40.0 | 40.0 | 25.0 | 27.5 | 40.0     | 40.0 | 50.0 |
| K        | 400            | 440  | 440  | 470  | 470  | 505  | 505  | 535      | 535  | 545  |
| L        | 80             | 104  | 102  | 148  | 147  | 104  | 102  | 148      | 147  | 178  |
| D        | 62             | 94   | 94   | 94   | 94   | 145  | 145  | 145      | 145  | 145  |
| d        | 24             | 30   | 36   | 45   | 52   | 30   | 36   | 45       | 52   | 65   |
| s        | 3.5            | 4.0  | 4.0  | 5.0  | 5.5  | 4.0  | 4.0  | 5.0      | 5.5  | 5.5  |
| k        | 2.0            | 4.0  | 4.0  | 4.0  | 3.5  | 4.0  | 4.0  | 4.0      | 3.5  | 4.0  |
| kg       | 6.3            | 8.5  | 8.5  | 10.0 | 10.0 | 12.5 | 12.5 | 14.0     | 14.0 | 18.0 |

- The **GVT** logo is a registered trademark.
- Note: All texts and images are the property of **GVT** and must not be replicated or modified, not even in part, without written approval.
- Original products may differ from the product images shown, due to different materials and the like.
- Subject to error and changes.