



Technical Data Sheet M-ET 305

GVT.

2/2-way solenoid valve - valve normally closed (NC)
- valve normally open (NO)

Solenoid valve for extended temperature range

- For high temperature applications **+300 °C**
- No pressure difference necessary
- High life time
- Reliable and sturdy sealing elements
- Long-term availability of spare parts
- High-quality materials

TECHNICAL SPECIFICATIONS

Type of control:	Force-pilot operated, no pressure difference necessary
Design:	Piston design
Connection:	Threaded G 1/4 - G 2 DIN ISO 228 (BSP) Flanged DN15 - DN100 EN 1092-1 Form B1
Installation:	Actuator downwards
Pressure:	0 - 40 bar (see table page 2)
Medium:	Clean, neutral, liquid or gaseous
Viscosity:	22 mm ² /s
Temperature range:	Medium: -40 °C up to +300 °C Ambient: -40 °C up to +50 °C
Body material	Brass 2.0402 Cast steel GP21540 GH Stainless steel 1.4571 / 1.4581 (AISI 316Ti)
Metallic inner parts:	Brass and stainless steel
Sealing:	Metallic

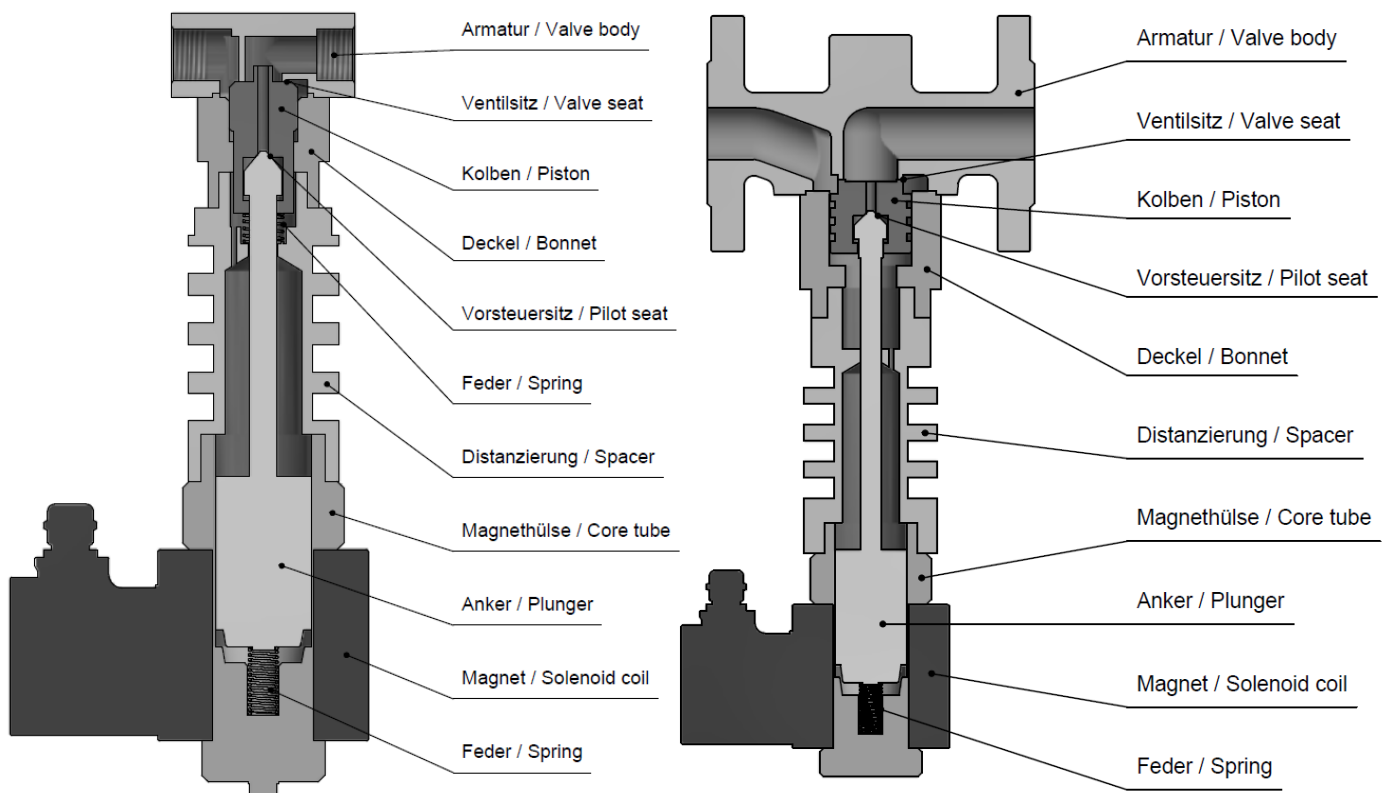
Supply voltage:	AC 50/60Hz 24V, 110V, 230V DC 0Hz 12V, 24V				
Voltage tolerance:	-10% / +10%				
Consumption:	T06 = 21 Watt T07 = 26 Watt T08 = 60 Watt T09 = 80 Watt				
Protection class:	IP 65 acc. to DIN 60529				
Duty factor:	100% ED - VDE 0580				
Connection type:	Terminal box				
Function:	<table border="0" style="width: 100%;"> <tr> <td style="text-align: center;">NC</td> <td style="text-align: center;">NO</td> </tr> <tr> <td style="text-align: center;"> </td> <td style="text-align: center;"> </td> </tr> </table>	NC	NO		
NC	NO				
Certificates:					
Ex-proof:	-				

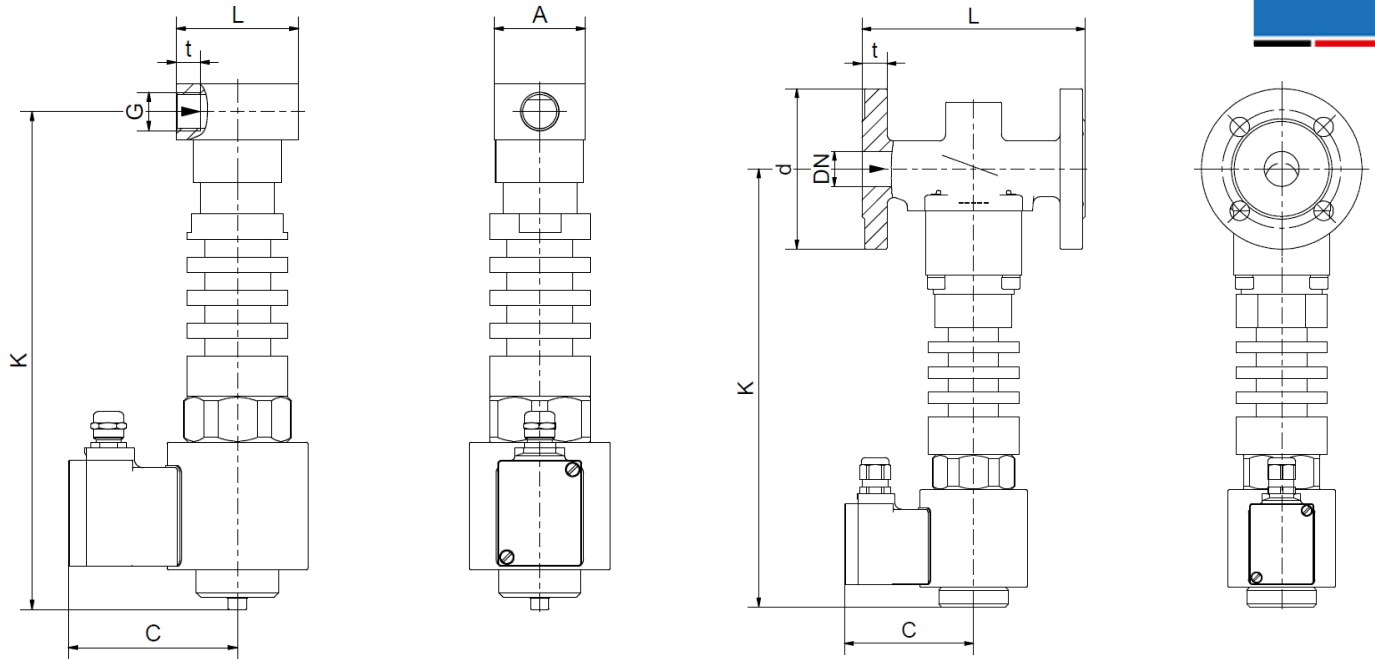
ORDERING SYSTEM

M-ET	3	05	G	D	13.0	A	G	T07	
Type	Control type	Code	Connection type	Connection size	Nominal diameter mm	Body material	Sealing material	Actuator type	Option
	3 force-pilot oper.		G BSP N NPT X PN40 Y ANSI300	B 1/4 C 3/8 D 1/2 E 3/4 F 1 G 1 1/4 H 1 1/2 I 2	J DN15 K DN20 L DN25 M DN32 N DN40 O DN50 P DN65 Q DN80 R DN100	A Brass C AISI316 F GP240GH	G metallic	T Temperature design	

Standard NC type	Seat \varnothing mm	Kv-value m^3/h	max. pressure			
			T06	T07	T08	T09
M-ET 305 GB	13.0	1.8	0-4	0-25	0-40	-
M-ET 305 GC	13.0	4.0	0-4	0-25	0-40	-
M-ET 305 GD(J)	13.0 (15.0)	4.5	0-4	0-25	0-40	-
M-ET 305 ?E(K)	25.0 (20.0)	11.5	-	016	0-40	-
M-ET 305 ?F(L)	25.0	13.0	-	0-16	0-40	-
M-ET 305 ?G(M)	40.0 (32.0)	29.0	-	-	0-25	0-40
M-ET 305 ?H(N)	40.0	33.0	-	-	0-25	0-40
M-ET 305 ?I(O)	50.0	49.0	-	-	0-25	0-40
M-ET 305 XP	65.0	75.0	-	-	0-12	0-20
M-ET 305 XQ	80.0	97.0	-	-	-	0-16
M-ET 305 XR	100.0	143.0	-	-	-	0-5

Valve design





Coil	T06	T07			T06		T06		
Type	M-ET 305 GB-GD	M-ET 305			M-ET 305		M-ET 305		
		GD	GE-GF	GE-GF	GG-GH	GI	GG-GH	GI	
G	1/4-1/2	1/2	3/4-1	3/4-1	1 1/4-1 1/2	2	1 1/4-1 1/2	2	
A	48	48	70	70	96	112	96	112	
C	84	93	93	107	107	107	127	127	
K	250	276	310	330	371	390	410	428	
L	67	67	96	95	140	168	140	168	
t	12	13	16	16	22	22	22	22	
kg	3.6	4.7	7.6	12.2	13.7	15.2	18.0	19.3	

Coil	T07				T08					
Type	M-ET 305			M-ET 305						
	XJ	XK	XL	XK	XL	XM	XN	XO	XP	
DN	15	20	25	20	25	32	40	50	65	
C	93	93	93	107	107	107	107	107	107	
d	95	105	115	105	115	140	150	165	185	
K	285	315	315	335	335	355	355	361	395	
L	130	150	160	150	160	180	200	230	290	
t	16	18	18	18	18	18	18	20	22	
kg	6.7	10.0	10.6	14.2	14.7	18.1	18.1	20.0	32.4	

Coil	T09					
Type	M-ET 305					
	XM	XN	XO	XP	XQ	XR
DN	32	40	50	65	80	100
C	127	127	127	127	127	127
d	140	150	165	185	200	235
K	430	430	415	461	476	491
L	180	200	230	290	310	350
t	18	18	20	22	24	24
kg	31.0	31.0	32.5	45.5	58.0	68.0

- The GVT logo is a registered trademark.
- Note: All texts and images are the property of GVT and must not be replicated or modified, not even in part, without written approval.
- Original products may differ from the product images shown, due to different materials and the like.
- Subject to error and changes.