

Technical Data Sheet M-ET 204

GVT.

2/2-way solenoid valve - valve normally closed (NC)
- valve normally open (NO)

Solenoid valve for high temperature applications

- For high temperature applications **+140°C**
- Pressure difference necessary
- High life time
- Reliable and sturdy sealing elements
- Long-term availability of spare parts
- High-quality materials

TECHNICAL SPECIFICATIONS

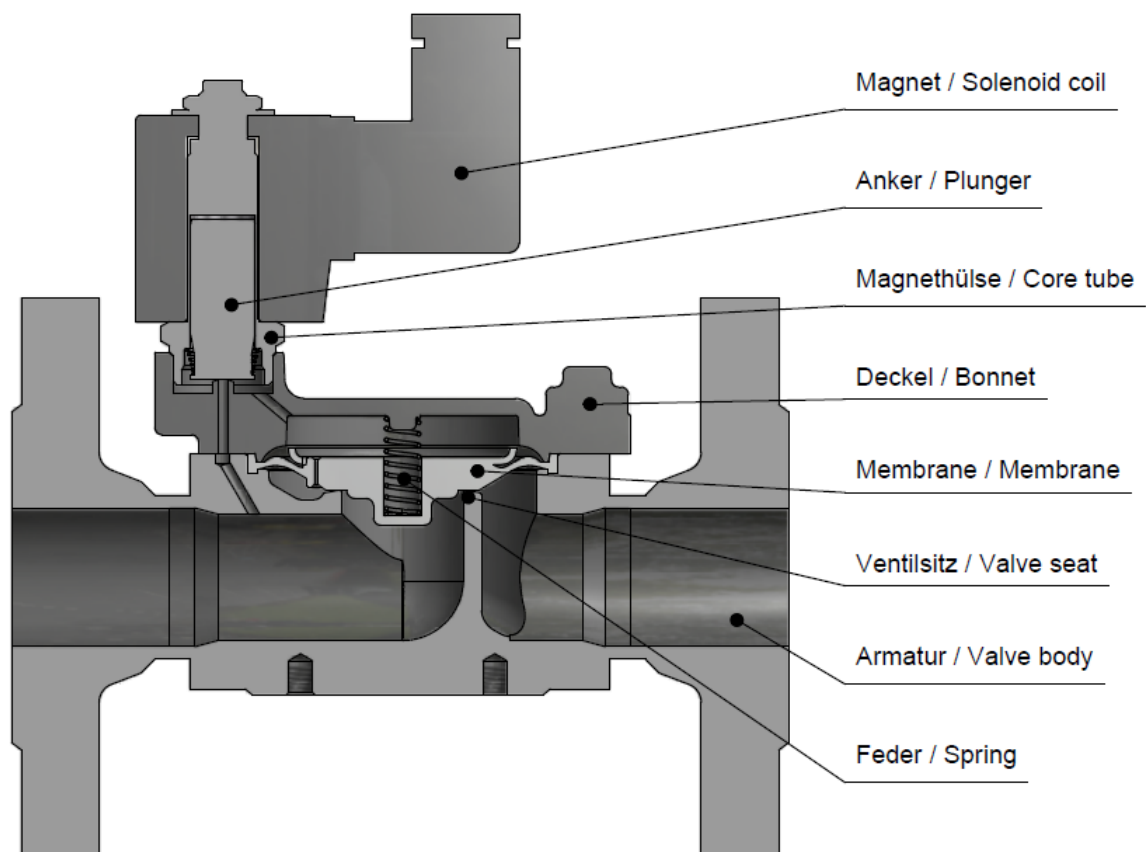
Type of control:	Pilot operated, Pressure difference is required	Supply voltage:	AC 50/60Hz 24V, 110V, 230V DC 0Hz 12V, 24V
Design:	Diaphragm design	Voltage tolerance:	-10% / +10%
Connection:	Flanges acc. To EN 1092-1 Form B1/B2 <i>Further connections on request</i>	Consumption:	T01 = 6.8 Watt T03 = 18 Watt
Installation:	Preferable with actuator upright	Protection class:	IP 65 acc. to DIN 60529
Pressure:	0.3 - 20 bar (see table page 2)	Duty factor:	100% ED - VDE 0580
Medium:	Clean, neutral, liquid or gaseous	Connection type:	Plug
Viscosity:	22 mm ² /s	Function:	NC NO
Temperature range:	Medium: -10 °C up to +140 °C Ambient: -10 °C up to +50 °C		
Body material	Cast iron EN-GJL-250 Cast steel GP240 GH Stainless steel 1.4581 (AISI 316Ti)	Certificates:	
Metallic inner parts:	Brass and stainless steel	Ex-proof:	-
Sealing:	FKM, EPDM		

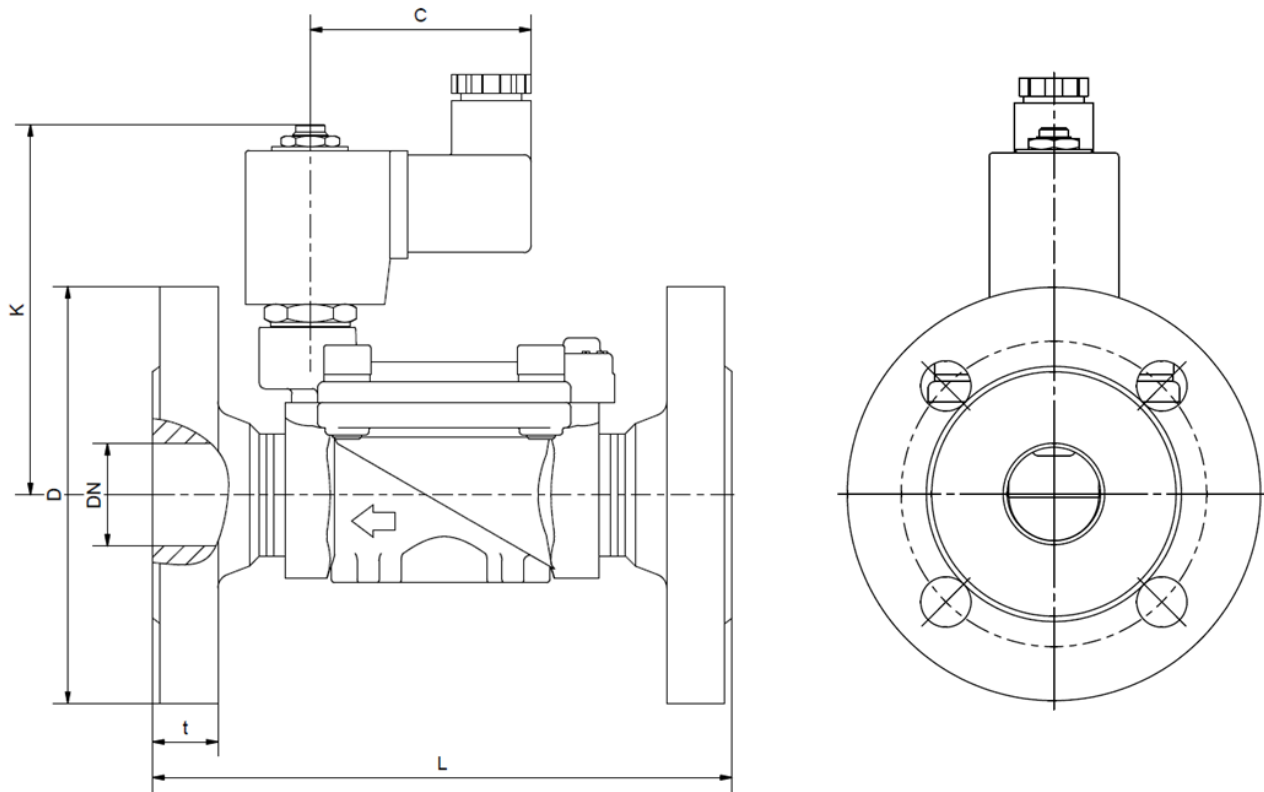
ORDERING SYSTEM

M-ET	2	04	D	L	25.0	E	C	T01	
Type	Control type	Code	Connection type	Connection size	Nominal diameter mm	Body material	Sealing material	Actuator type	Option
	2 pilot operated		D PN16 X PN40	J DN15 K DN20 L DN25 M DN32 N DN40 O DN50		C AISI316 E EN-GJL F GP240	B FKM C EPDM	T +140°C	

Standard NC type	Seat \varnothing mm	Kv-value m ³ /h	max. pressure NC		max. pressure NO
			T01	T03	T03
M-ET 204 DJ	15	3.9	0.3-8	0.3-20	0.3-16
M-ET 204 DK	20	10.8	0.3-8	0.3-20	0.3-16
M-ET 204 DL	25	13.0	0.3-8	0.3-20	0.3-16
M-ET 204 DM	32	30.0	-	0.3-16	0.3-10
M-ET 204 DN	40	32.0	-	0.3-16	0.3-10
M-ET 204 DO	50	45.0	-	0.3-16	0.3-10

Valve design





Coil	T01			T03					
Type	M ET 204			M ET 204					
	DJ	DK	DL	DJ	DK	DL	DM	DN	DO
DN	15	20	25	15	20	25	32	40	50
C	51	51	51	61	61	61	61	61	61
D	95	105	115	95	105	115	140	150	165
K	82	90	90	97	105	105	120	120	135
L	130	150	160	130	150	160	180	200	230
t	16	18	18	16	18	18	18	18	20
kg	2.3	3.3	3.8	2.3	3.3	3.8	6.5	7.0	9.5

- The **GVT** logo is a registered trademark.
- Note: All texts and images are the property of **GVT** and must not be replicated or modified, not even in part, without written approval.
- Original products may differ from the product images shown, due to different materials and the like.
- Subject to error and changes.