



Technical Data Sheet M-HD 301

GVT.

2/2-way solenoid valve - valve normally closed (NC)
- valve normally open (NO)

Solenoid valve for high pressure applications

- For high pressure applications **up to 130 bar**
- No pressure difference necessary
- High life time
- Reliable and sturdy sealing elements
- Long-term availability of spare parts
- High-quality materials

TECHNICAL SPECIFICATIONS

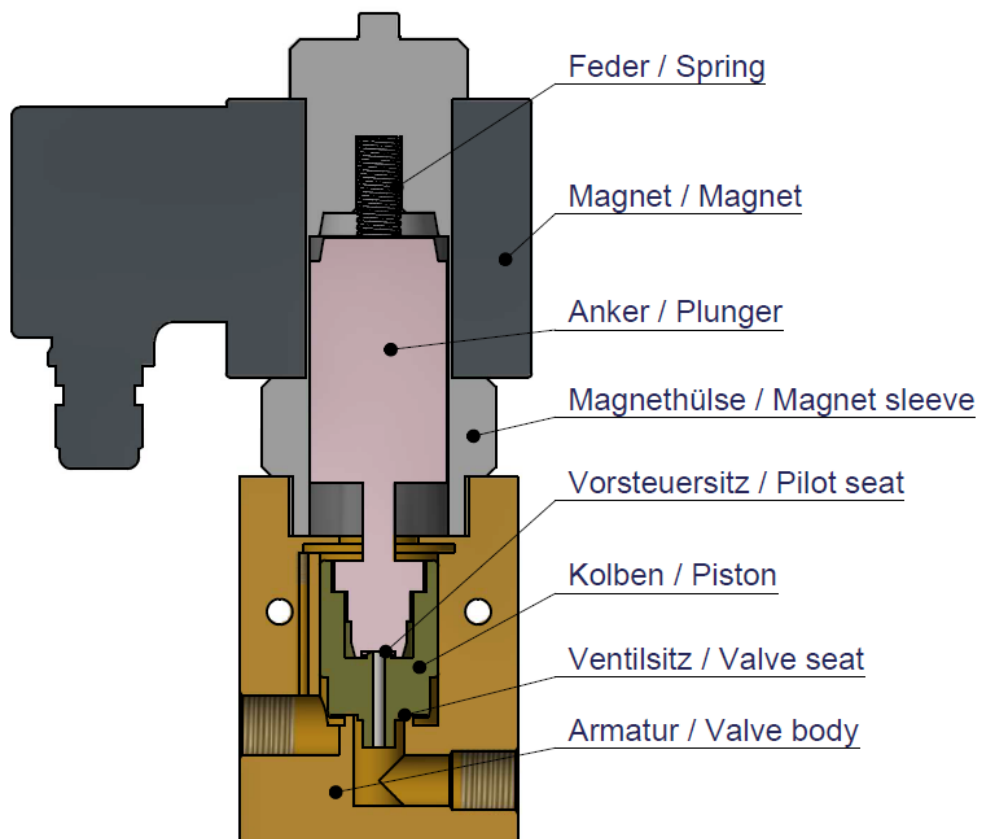
Type of control:	Force-pilot operated, no pressure difference necessary	Supply voltage:	AC 50/60Hz 24V, 110V, 230V DC 0Hz 12V, 24V
Design:	Piston design	Voltage tolerance:	-10% / +10%
Connection:	Threaded G 1/4 - G 2 DIN ISO 228 (BSP) <i>Further connections on request</i>	Consumption:	A07 = 46 Watt E07 = 30 Watt A08 = 100 Watt E08 = 47 Watt A09 = 150 Watt E09 = 75 Watt
Installation:	Actuator upright	Protection class:	IP 65 acc. to DIN 60529
Pressure:	0 - 130 bar (see table page 2)	Duty factor:	100% ED - VDE 0580
Medium:	Clean, neutral, liquid or gaseous	Connection type:	Terminal box
Viscosity:	22 mm ² /s	Function:	NC NO
Temperature range:	Medium: -40 °C up to +80 °C Ambient: -10 °C up to +50 °C		
Body material	Brass 2.0401 Stainless steel 1.4408 (AISI 316LN)	Certificates:	
Metallic inner parts:	Brass and stainless steel	Ex-proof:	acc. to directive 2014/34/EG (ATEX)
Sealing:	PTFE		

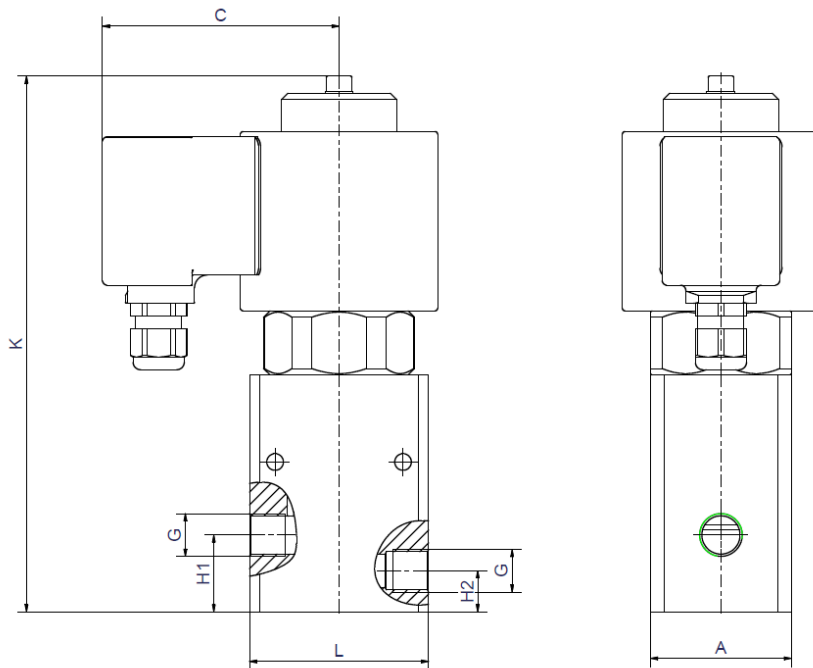
ORDERING SYSTEM

M-HD	3	01	G	D	13.5	A	D	A08	NO
Type	Control type	Code	Connection type	Connection size	Nominal diameter mm	Body material	Sealing material	Actuator type	Option
	3 force-pilot oper.		G BSP N NPT	B 1/4 C 3/8 D 1/2 E 3/4 F 1 G 1 1/4 H 1 1/2 I 2		A Brass C AISI316	D PTFE	A standard E ex.-proof	

Standard NC type	Seat \varnothing mm	Kv-value m ³ /h	max. pressure			max. pressure ATEX	
			A07	A08	A09	E08	E09
M-HD 301 GB	13	1.8	0-70	0-100	0-130	0-70	0-100
M-HD 301 GC	13	3.3	0-70	0-100	0-130	0-70	0-100
M-HD 301 GD	13	3.8	0-70	0-100	0-130	0-70	0-100
M-HD 301 GE	25	11.5	0-70	0-100	0-100	0-70	0-100
M-HD 301 GF	25	13.0	0-70	0-100	0-100	0-70	0-100
M-HD 301 GG	32	22.0	-	0-70	0-100	-	0-70
M-HD 301 GH	40	24.0	-	0-70	0-100	-	0-70
M-HD 301 GI	50	32.0	-	0-70	0-80	-	0-70

Valve design





Coil	A07 / E07		A08 / E08			
Type	M-HD 301		M-HD 301			
	GB - GD	GE - GF	GB - GD	GE - GF	GG - GH	GI
G	1/4 - 1/2	3/4 - 1	1/4 - 1/2	3/4 - 1	1 1/4 - 1 1/2	2
C	92	92	106	106	106	106
H1	30	45	30	45	33	38.5
H2	16	25	16	25	33	38,5
K	210	255	252	260	310	297
A	55	65	55	65	96	119
L	70	100	70	100	140	168
t	14	17	14	17	22	24
kg	5.2	9.0	9.0	12.0	15.0	21.0

Coil	A09 / E09			
Type	M-HD 301			
	GB - GD	GE - GF	GG - GH	GI
G	1/4 - 1/2	3/4 - 1	1 1/4 - 1 1/2	2
C	126	126	126	126
H1	30	45	33	38,5
H2	16	25	33	38,5
K	326	359	368	363
A	55	65	96	119
L	70	100	140	168
t	14	17	22	24
kg	22.0	24.5	27.0	48.6

- The GVT logo is a registered trademark.
- Note: All texts and images are the property of GVT and must not be replicated or modified, not even in part, without written approval.
- Original products may differ from the product images shown, due to different materials and the like.
- Subject to error and changes.