



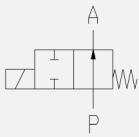
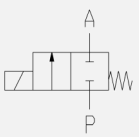



2/2-way solenoid valve - valve normally closed (NC)
- valve normally open (NO)

Solenoid valve for high pressure applications

- For high pressure applications **up to 130 bar**
- No pressure difference necessary
- High life time
- Reliable and sturdy sealing elements
- Long-term availability of spare parts
- High-quality materials

TECHNICAL SPECIFICATIONS

Type of control:	Force-pilot operated, no pressure difference necessary
Design:	Piston design
Connection:	Flanged DN15 - DN100 acc. to EN 1092-1 Form B1/B2 <i>Further connections on request</i>
Installation:	Actuator upright
Pressure:	0 - 130 bar (see table page 2)
Medium:	Clean, neutral, liquid or gaseous
Viscosity:	22 mm ² /s
Temperature range:	Medium: -40 °C up to +80 °C Ambient: -10 °C up to +50 °C
Body material	Steel C22.8 Stainless steel 1.4408 (AISI 316LN)
Metallic inner parts:	Stainless steel
Sealing:	PTFE

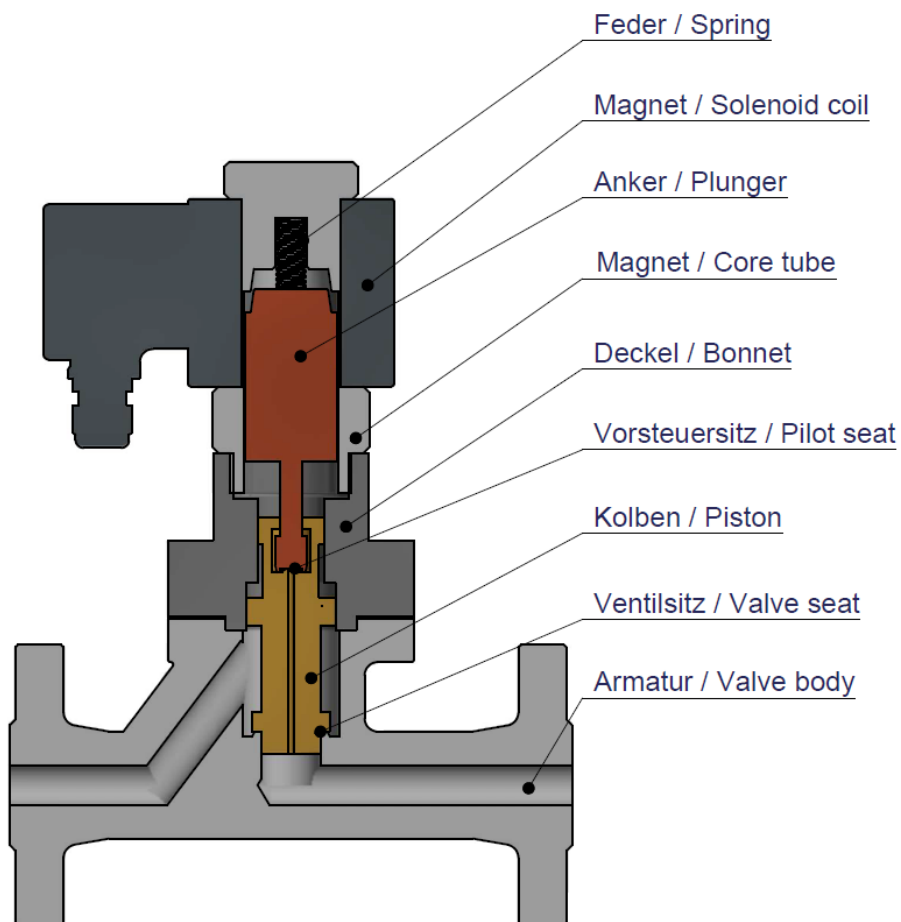
Supply voltage:	AC 50/60Hz 24V, 110V, 230V DC 0Hz 12V, 24V
Voltage tolerance:	-10% / +10%
Consumption:	A07 = 46 Watt E07 = 30 Watt A08 = 100 Watt E08 = 47 Watt A09 = 150 Watt E09 = 75 Watt
Protection class:	IP 65 acc. to DIN 60529
Duty factor:	100% ED - VDE 0580
Connection type:	Terminal box
Function:	<div style="display: flex; justify-content: space-around;"> <div style="text-align: center;"> <p>NC</p>  </div> <div style="text-align: center;"> <p>NO</p>  </div> </div>
Certificates:	  
Ex-proof:	acc. to directive 2014/34/EG (ATEX)

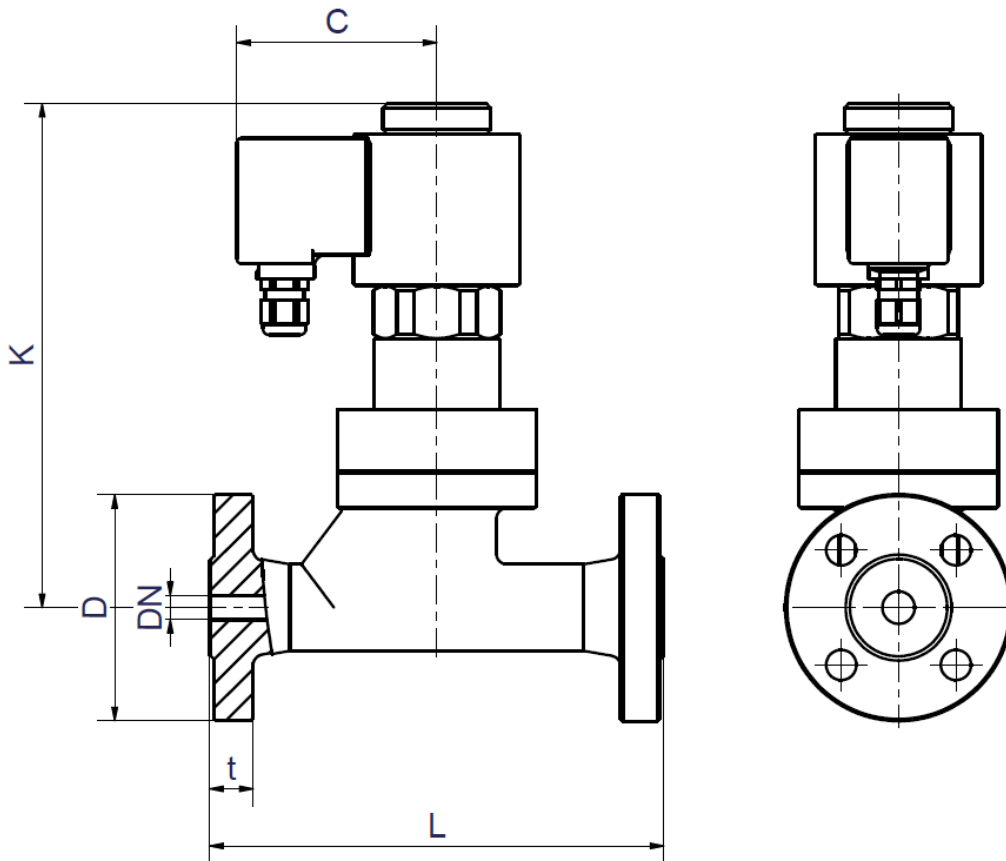
ORDERING SYSTEM

M-HD	3	01	S	L	25.0	C	D	A08	NO
Type	Control type	Code	Connection type	Connection size	Nominal diameter mm	Body material	Sealing material	Actuator type	Option
	3 force-pilot oper.		S special (PN160)	J DN15 K DN20 L DN25 M DN32 N DN40 O DN50 P DN65 Q DN80 R DN100		B C22.8 C AISI316	D PTFE	A standard E ex.-proof	

Standard NC type	Seat \varnothing mm	Kv-value m ³ /h	max. pressure			max. pressure ATEX	
			A07	A08	A09	E08	E09
M-HD 301 SJ	15	3.8	0-70	0-100		0-70	0-100
M-HD 301 SK	20	11.0	0-70	0-100	0-100	0-70	0-100
M-HD 301 SL	25	13.0	0-70	0-100	0-100	0-70	0-100
M-HD 301 SM	32	22.0	-	0-70	0-100	-	0-100
M-HD 301 SN	40	24.0	-	0-70	0-100	-	0-100
M-HD 301 SO	50	35.0	-	0-70	0-80	-	0-70
M-HD 301 SP	65	68.0	-	0-70	0-80	-	0-60
M-HD 301 SQ	80	85.0	-	-	0-70	-	0-60
M-HD 301 SR	100	120.0	-	-	0-70	-	0-55

Valve design





Coil	A07 / E07			A08 / E08						
	M-HD 301			M-HD 301						
Type	SJ	SK	SL	SJ	SK	SI	SM	SN	SO	SP
DN	15	20	25	15	20	25	32	40	50	65
C	93	93	93	107	107	107	107	107	107	107
D	105	130	140	105	130	140	155	170	195	220
K	233	207	207	292	266	266	323	on req.	311	281
L	210	230	230	210	230	230	260	260	300	340q
t	20	24	24	20	24	24	24	28	26	34
kg	4.0	10.6	11.0	4.0	9.3	10.0	16.5	on req.	24.0	31.6

Coil	A09 / E09								
Type	M-HD 301								
	SJ	SK	SL	SM	SN	SO	SP	SQ	SR
G	15	20	25	32	40	50	65	80	100
C	126	126	126	126	126	126	126	126	126
D	105	130	140	155	170	195	220	230	265
K	356	328	328	390	on req.	397	376	405	408
L	210	230	230	260	260	300	340	380	430
t	20	24	24	24	28	26	34	36	40
kg	9.0	15.0	15.5	25.3	on req.	27.5	39.0	53.5	70.2

- The GVT logo is a registered trademark.
- Note: All texts and images are the property of GVT and must not be replicated or modified, not even in part, without written approval.
- Original products may differ from the product images shown, due to different materials and the like.
- Subject to error and changes.