



# Technical Data Sheet P-PS 102



2/2-Way pressure controlled valve - valve normally closed (NC)

## Pressure controlled valve for clean, gaseous and liquid media

- No pressure difference necessary
- High life time
- Simple compact valve design
- Reliable and sturdy sealing elements
- Long-term availability of spare parts
- High-quality materials

## TECHNICAL SPECIFICATIONS

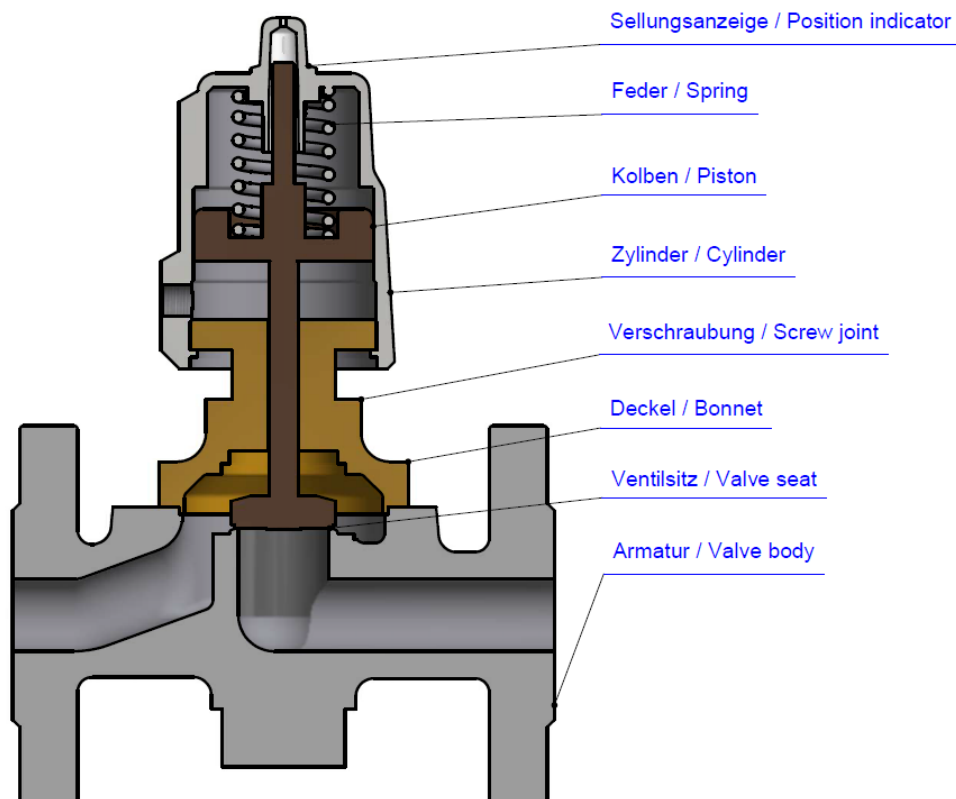
Type of control:	Direct acting, pressure controlled	Supply voltage:	-
Design:	Poppet design	Voltage tolerance:	-
Connection:	Flanged DN15 - DN200 EN 1092-1 Form B1/B2 Further connections available on request	Consumption:	-
Installation:	Preferable with actuator upright	Protection class:	-
Pressure:	0-40 bar (see table page 2)	Duty factor:	-
Medium:	Clean, neutral, gaseous and liquid	Connection type:	-
Viscosity:	600 mm <sup>2</sup> /s	Funktion:	<div style="display: flex; justify-content: space-around;"> <div style="text-align: center;"> <p>NC</p> </div> <div style="text-align: center;"> <p>NO</p> </div> </div>
Temperature range:	Medium: -40 °C up to +200 °C Ambient: -10 °C up to +60 °C	Certificates:	
Body material	Cast iron EN-GJL-240 Cast steel GP240 GH Spheroidal cast EN-GJS-400-18-LT Stainless steel	Ex-proof:	optional with mech. ATEX
Metallic inner parts:	Brass and stainless steel		
Sealing:	PTFE, FKM, EPDM		
Pilot pressure:	4-10 bar		
Pilot medium:	clean and neutral gases		

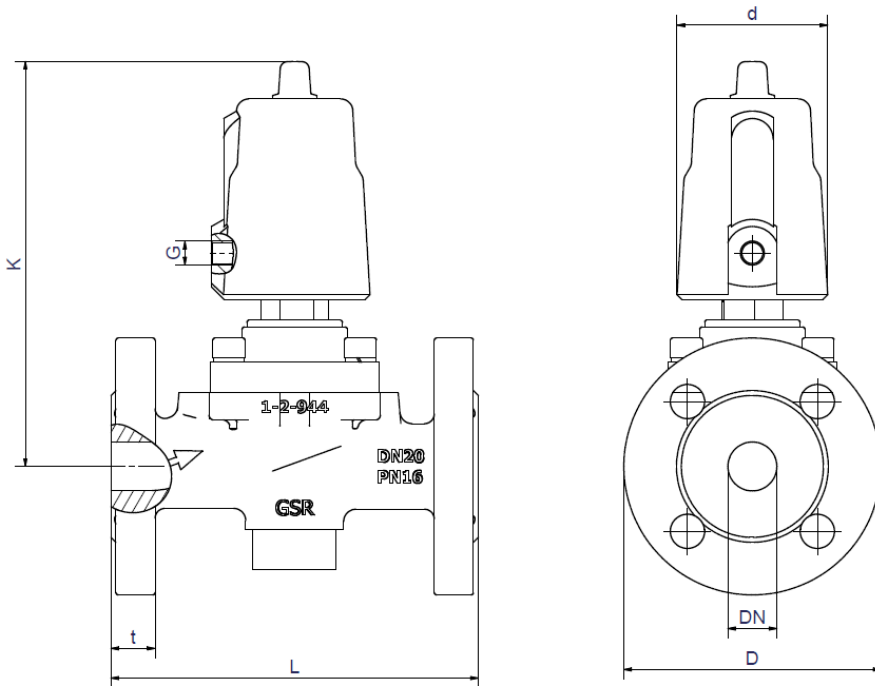
## ORDERING SYSTEM

P-PS	1	02	D	O	50.0	E	D	P08
Type	Control type	Code	Connection type	Connection size	Nominal diameter mm	Body material	Sealing material	Actuator type
	1 direct acting		D PN15	J DN15		D AISI316L	B FKM	05 50 mm
			X PN40	K DN20		E EN-GJL-240	C EPDM	08 80 mm
			A ANSI150	L DN25		F GP240 GH	D PTFE	13 125 mm
			Y ANSI300	M DN32		G EN-GJS-400		
			S Special	N DN40	R DN100			
				O DN50	S DN125			
				P DN65	T DN150			
				Q DN80	U DN200			

Standard NC type	Seat $\varnothing$ mm	Kv-value m <sup>3</sup> /h	Max. pressure with actuator					
			7.05		7.08		7.13	
			Cast iron	Cast steel St. steel	Cast iron	Cast steel St. steel	Cast iron Spher. cast	Cast steel St. steel
P-PS 102 DJ	15	6.8	-	0-20	-	0-40	-	-
P-PS 102 DK	20	6.8	0-13	0-12	-	0-25	-	-
P-PS 102 DL	25	11.0	0-13	0-13	0-13	0-25	-	-
P-PS 102 DM	32	18.0	0-5	0-5	0-13	0-14	-	-
P-PS 102 DN	40	27.0	0-5	0-5	0-13	0-14	-	-
P-PS 102 DO	50	43.0	0-3	0-3	0-9	0-9	0-13	0-20
P-PS 102 DP	65	71.0	-	-	0-6	0-6	0-13	0-15
P-PS 102 DQ	80	111.0	-	-	0-4	0-4	0-10	0-10
P-PS 102 DR	100	173.0	-	-	0-2.5	0-2.5	0-6	0-6
P-PS 102 DS	125	on req.	-	-	-	-	0-4.5	-
P-PS 102 DT	150	on req.	-	-	-	-	0-3	-
P-PS 102 DU	200	on req.	-	-	-	-	0-1.5	-

## Valve design





Act.	P05						P08			
	P-PS 102						P-PS 102			
Type	DJ	DK	DL	DM	DN	NO	DJ	DK	DL	DM
DN	15	20	25	32	40	50	15	20	25	32
d	62	62	62	62	62	62	94	94	94	94
G	1/8	1/8	1/8	1/8	1/8	1/8	1/8	1/8	1/8	1/8
K	178	182	182	208	208	209	235	231	232	245
D	95	105	115	140	150	165	95	105	115	140
L	130	150	160	180	200	230	130	150	160	180
t	16	18	18	18	18	20	16	18	18	18
kg	3.5	4.7	5.4	8.2	8.7	11.8	3.8	5.1	5.7	8.3

Act.	P08					P13						
	P-PS 102					P-PS 102						
Type	DN	DO	DP	DQ	DR	DO	DP	DQ	DR	DS	DT	DU
DN	40	50	65	80	100	50	65	80	100	125	150	200
d	94	94	94	94	94	141	141	141	141	141	141	141
G	1/8	1/8	1/8	1/8	1/8	1/4	1/4	1/4	1/4	1/4	1/4	1/4
K	245	256	270	283	303	339	347	359	382	407	439	531
D	150	165	185	200	235	165	185	200	220	250	285	340
L	200	230	290	310	350	230	290	310	350	400	480	600
t	18	20	20	25	25	20	19	21	24	26	26	32
kg	8.8	12.0	15.8	22.0	30.2	13.7	25.3	24.8	39.5	11.6	24.5	105.1

- The **GVT** logo is a registered trademark.
- Note: All texts and images are the property of **GVT** and must not be replicated or modified, not even in part, without written approval.
- Original products may differ from the product images shown, due to different materials and the like.
- Subject to error and changes.