



Technical Data Sheet M-ET 306



2/2-way solenoid valve - valve normally closed (NC)
- valve normally open (NO)

Solenoid valve for high temperature applications

- For high temperature applications +140 °C
- No pressure difference necessary
- High life time
- Reliable and sturdy sealing elements
- Long-term availability of spare parts
- High-quality materials

TECHNICAL SPECIFICATIONS

Type of control:	Force-pilot operated, no pressure difference necessary
Design:	Diaphragm design
Connection:	Threaded G 1/4 - G 2 DIN ISO 228 (BSP) <i>Further connections on request</i>
Installation:	Actuator upright
Pressure:	0 - 16 bar
Medium:	Clean, neutral, liquid or gaseous
Viscosity:	22 mm ² /s
Temperature range:	Medium: -10 °C up to +140 °C Ambient: -10 °C up to +50 °C
Body material	Brass 2.0402 Stainless steel 1.4581 (AISI 316Ti)
Metallic inner parts:	Brass and stainless steel
Sealing:	FKM, EPDM

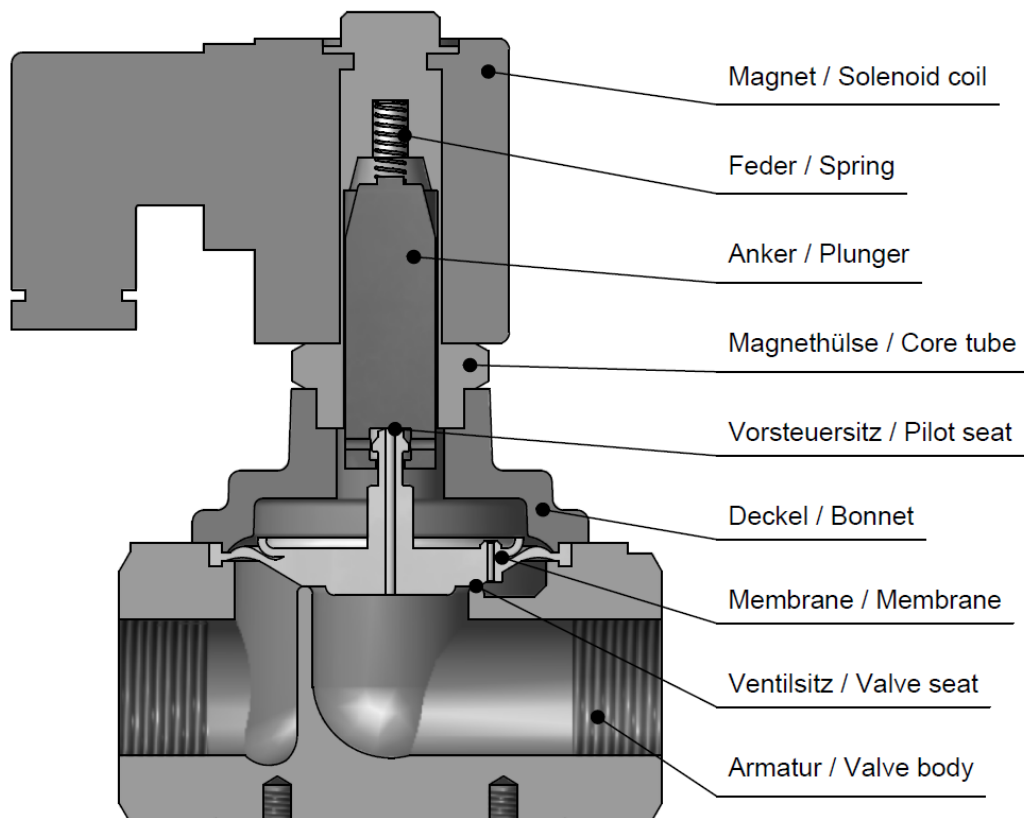
Supply voltage:	AC 50/60Hz 24V, 110V, 230V DC 0Hz 12V, 24V
Voltage tolerance:	-10% / +10%
Consumption:	T03 = 18 Watt T05 = 18 Watt T06 = 21 Watt T07 = 26 Watt T08 = 60 Watt
Protection class:	IP 65 acc. to DIN 60529
Duty factor:	100% ED - VDE 0580
Connection type:	Plug / Terminal box
Function:	<div style="display: flex; justify-content: space-around;"> <div style="text-align: center;"> <p>NC</p> </div> <div style="text-align: center;"> <p>NO</p> </div> </div>
Certificates:	
Ex-proof:	-

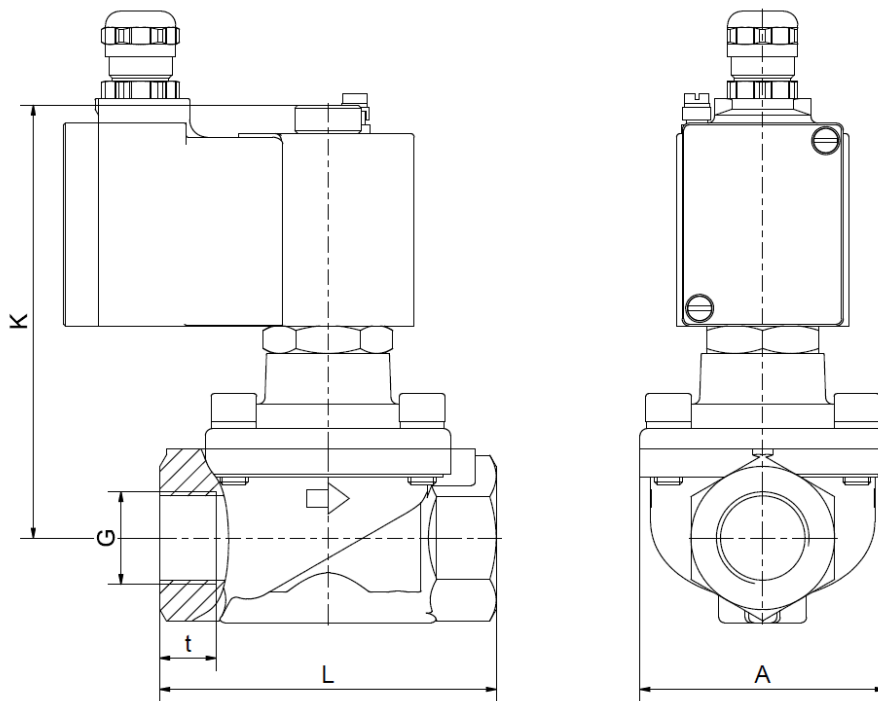
ORDERING SYSTEM

M-ET	3	06	G	D	13.5	A	C	T05	NO
Type	Control type	Code	Connection type	Connection size	Nominal diameter mm	Body material	Sealing material	Actuator type	Option
	3 force-pilot oper.		G BSP N NPT	B 1/4 C 3/8 D 1/2 E 3/4 F 1 G 1 1/4 H 1 1/2 I 2		A Brass C AISI316	B FKM C EPDM	T +140 °C	

Standard NC type	Seat \varnothing mm	Kv-value m^3/h	max. pressure				
			T03	T05	T06	T07	T08
M-DS 301 GB	13.5	1.8	0-10	0-16	-	-	-
M-DS 301 GC	13.5	3.6	0-10	0-16	-	-	-
M-DS 301 GD	13.5	3.9	0-10	0-16	-	-	-
M-DS 301 GE	27.5	10.8	0-8	0-12	0-16	-	-
M-DS 301 GF	27.5	13.0	0-8	0-12	0-16	-	-
M-DS 301 GG	40.0	22.0	-	-	0-3	0-8	0-16
M-DS 301 GH	40.0	25.0	-	-	0-3	0-8	0-16
M-DS 301 GI	50.0	30.0	-	-	-	0-6	0-16

Valve design





Coil	T03					T05				
	M-ET 306					M-ET 306				
Type	GB	GC	GD	GE	GF	GB	GC	GD	GE	GF
G	1/4	3/8	1/2	3/4	1	1/4	3/8	1/2	3/4	1
A	48	48	48	70	70	48	48	48	70	70
C	61	61	61	61	61	67	67	67	67	67
K	86	86	86	96	96	104	104	104	120	120
L	67	67	67	96	96	67	67	67	96	96
t	12	12	13	16	16	12	12	13	16	16
kg	0.9	0.8	0.8	1.5	1.4	1.1	1.1	1.0	1.8	1.7

Coil	T06				T07			T08		
	M-ET 306				M-ET 306			M-ET 306		
Type	GE	GF	GG	GH	GG	GH	GI	GG	GH	GI
G	3/4	1	1 1/4	1 1/2	1 1/4	1 1/2	2	1 1/4	1 1/2	2
A	70	70	96	96	96	96	112	96	96	112
C	84	84	84	84	93	93	93	107	107	107
K	156	156	173	173	196	196	205	243	243	251
L	96	96	140	140	140	140	168	140	140	168
t	16	16	22	22	22	22	25	22	22	25
kg	3.0	2.9	5.0	4.7	6.2	5.9	7.2	10.2	9.9	11.3

- The GVT logo is a registered trademark.
- Note: All texts and images are the property of GVT and must not be replicated or modified, not even in part, without written approval.
- Original products may differ from the product images shown, due to different materials and the like.
- Subject to error and changes.