



Technical Data Sheet M-PS 104



- 3/2-way solenoid valve - valve normally closed (NC)
- valve normally open (NO)
- universal function (UN)

Solenoid valve for neutral, gaseous and liquid media

- For general purposes
- No pressure difference necessary
- High life time
- Reliable and sturdy sealing elements
- Long-term availability of spare parts
- High-quality materials

TECHNICAL SPECIFICATIONS

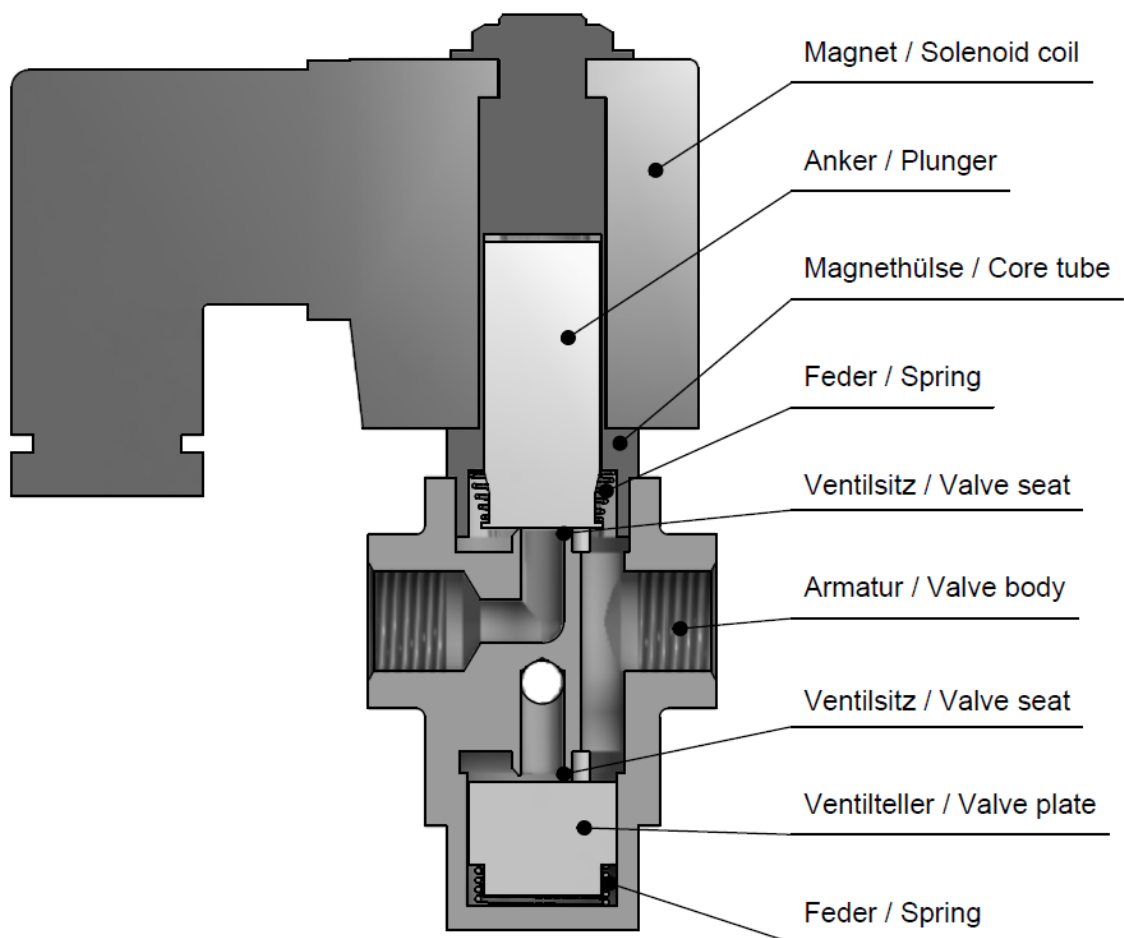
Type of control:	Direct operated, no pressure difference necessary	Supply voltage:	AC 50/60Hz 24V, 110V, 230V DC 0Hz 12V, 24V
Design:	Piston design	Voltage tolerance:	-10% / +10%
Connection:	Threaded G 1/4 DIN ISO 228 (BSP) <i>Further connections on request</i>	Consumption:	A03 = 18.5 Watt E02 = 10 Watt
Installation:	Actuator upright	Protection class:	IP 65 acc. to DIN 60529
Pressure:	0 - 40 bar (see table page 2)	Duty factor:	100% ED - VDE 0580
Medium:	Clean, neutral, liquid or gaseous	Connection type:	Terminal box
Viscosity:	22 mm ² /s	Function:	<div style="display: flex; justify-content: space-around;"> <div style="text-align: center;"> <p>NC</p> </div> <div style="text-align: center;"> <p>NO</p> </div> </div>
Temperature range:	Medium: -10 °C up to +80 °C Ambient: -10 °C up to +50 °C	Certificates:	
Body material	Brass 2.0402 Stainless steel 1.4408 (AISI 316L)	Ex-proof:	acc. to directive 2014/34/EG (ATEX)
Metallic inner parts:	Brass and stainless steel		
Sealing:	FKM		

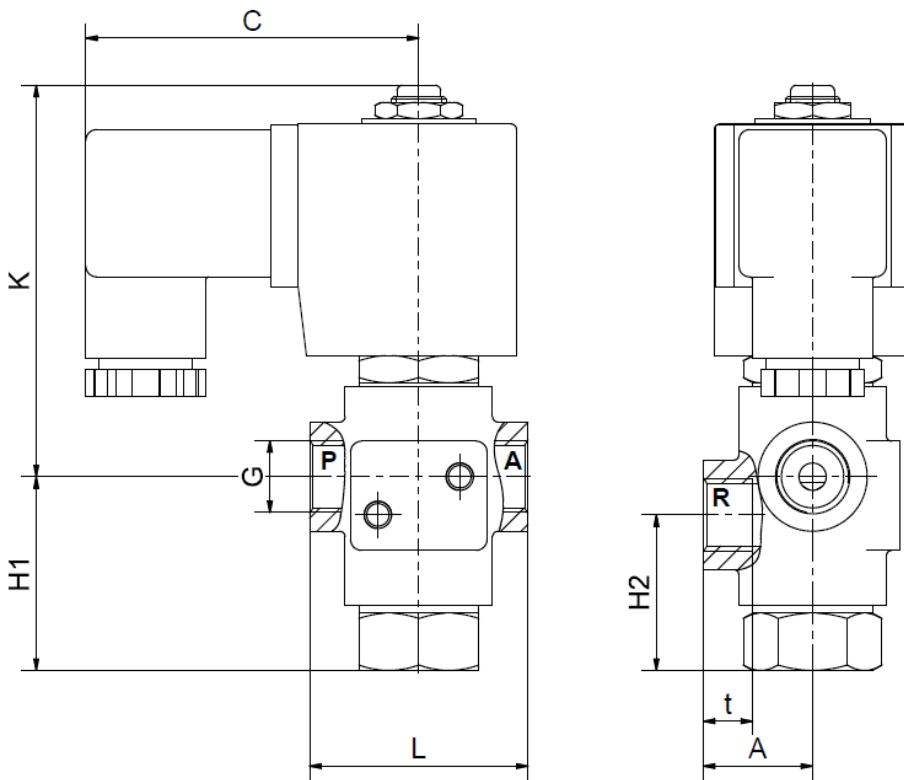
ORDERING SYSTEM

M-PS	1	04	G	D	1.5	A	B	A03	UN
Type	Control type	Code	Connection type	Connection size	Nominal diameter mm	Body material	Sealing material	Actuator type	Option
	1 direct operated		G BSP N NPT	B 1/4		A Brass C AISI316L	B FKM	A standard E ex.-proof	

Standard type	Seat \varnothing mm	Kv-value m^3/h	max. pressure NC		max. pressure NO		max. pressure UN	
			A03	E02	A03-NO	E02-NO	A03-UN	E02-UN
M-PS 104 GB	1.0	0.06	0-40	0-40	0-28	0-40	0-28	0-20
M-PS 104 GB	1.5	0.09	0-36	0-32	0-20	0-32	0-20	0-10
M-PS 104 GB	2.0	0.13	0-28	0-20	0-12	0-20	0-12	0-8
M-PS 104 GB	2.5	0.16	0-18	0-14	0-9	0-14	0-9	0-7
M-PS 104 GB	3.0	0.20	0-15	0-10	0-6.5	0-10	0-6.5	0-4
M-PS 104 GB	4.0	0.35	0-9	0-7	0-4	0-7	0-4	0-3
M-PS 104 GB	5.0	0.50	0-6	0-4	0-2.5	0-4	0-2.5	-

Valve design





Coil	A03 / E02
Type	M-PS 104 GB1.0-5.0AB (Brass)
G	1/4
A	20
C	61
H1	36
H2	29
K	72
L	40
t	9
kg	0.7

Different dimension „C“ for ATEX coil

- The **GVT** logo is a registered trademark.
- Note: All texts and images are the property of **GVT** and must not be replicated or modified, not even in part, without written approval.
- Original products may differ from the product images shown, due to different materials and the like.
- Subject to error and changes.