



Technical Data Sheet M-PS 302



2/2-way solenoid valve - valve normally closed (NC)
- valve normally open (NO)

Solenoid valve for clean, neutral, gaseous and liquid media

- For general purposes
- Pressure difference is required
- High life time
- Reliable and sturdy sealing elements
- Long-term availability of spare parts
- High-quality materials

TECHNICAL SPECIFICATIONS

Type of control: Force-pilot operated,
no pressure difference necessary

Design: Piston design

Connection: Flanged acc. to EN 1092-1 Form B1/B2
Other flanged connections like ASME on request

Installation: Actuator upright

Pressure: 0 - 40 bar (see table page 2)

Medium: Clean, neutral, liquid or gaseous

Viscosity: 22 mm²/s

Temperature range: Medium: -40 °C up to +80 °C
Ambient: -40 °C up to +50 °C

Body material: Spheroidal cast EN-GJS-400-18-LT
Cast iron EN-GJL-250
Cast steel GP240 GH
Stainless steel 1.4581 (AISI 316Ti)

Metallic inner parts: Brass and Stainless steel

Sealing: PTFE

Supply voltage: AC 50/60Hz 24V, 110V, 230V
DC 0Hz 12V, 24V

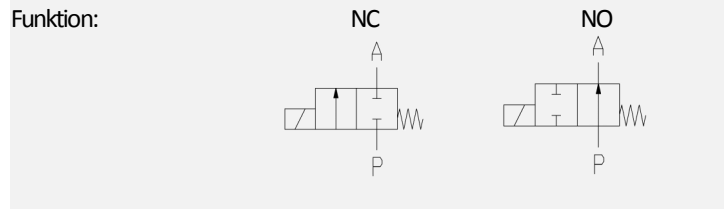
Voltage tolerance: -10% / +10%

Consumption: A05 = 24 Watt E05 = 24 Watt
A06 = 30 Watt E06 = 24 Watt
A07 = 46 Watt E07 = 30 Watt
A08 = 100 Watt E08 = 47 Watt
A09 = 150 Watt E09 = 75 Watt

Protection class: IP 65 acc. to DIN 60529

Duty factor: 100% ED - VDE 0580

Connection type: Plug / Terminal box



Certificates:   

Ex-proof: acc. to directive 2014/34/EG (ATEX)

ORDERING SYSTEM

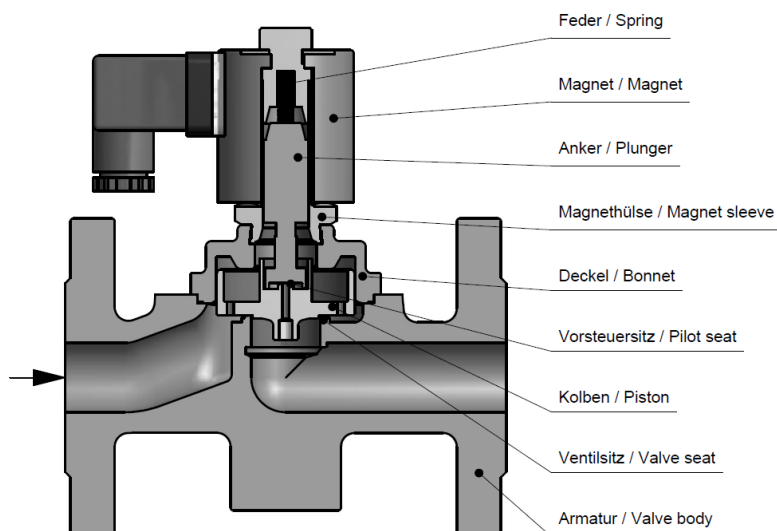
M-PS	3	02	D	L	25.0	E	D	A05
Type	Control type	Code	Connection type	Connection size	Nominal diameter mm	Body material	Sealing material	Actuator type
	3 force-pilot oper.		D PN16	J DN15		C AISI316	A NBR	A standard
			X PN40	K DN20		E EN-GJL-250	B FKM	E ex.-proof
			A ANSI150	L DN25		F GP240 GH	C EPDM	
			Y ANSI300	M DN32		G EN-GJS-400	D PTFE	
				N DN40	S DN125			
				O DN50	T DN150			
				P DN65	U DN200			
				Q DN80	V DN250			
				R DN100	W DN300			

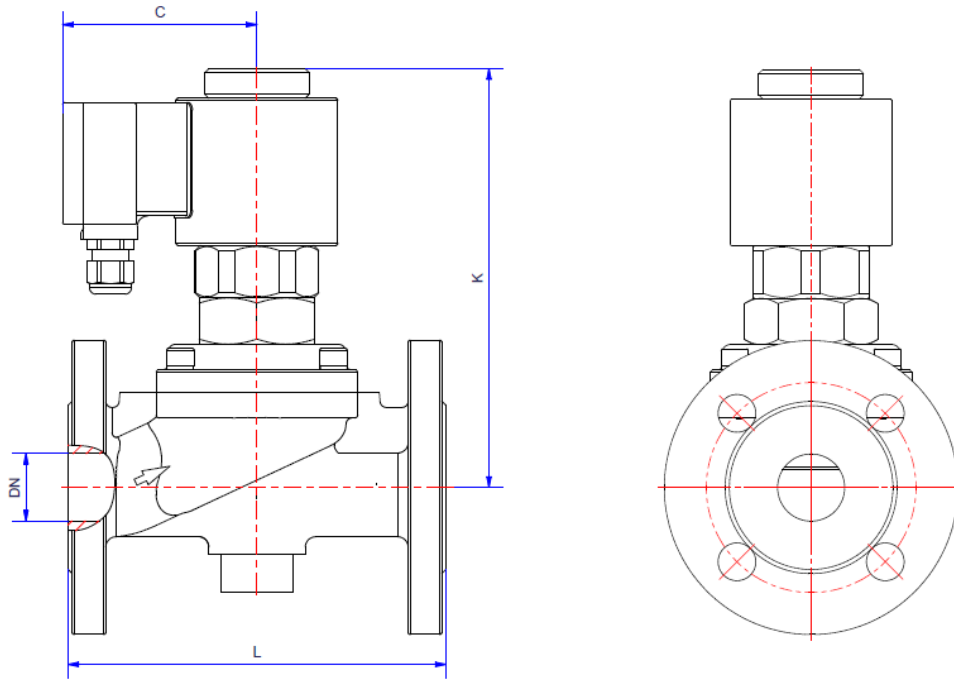
Standard NC type	Seat ø mm	Kv-value m ³ /h	max. pressure					
			A05	A06	A07	A08	A09	A10
M-PS 302 X(D)J	15.0	5.0	0-40	0-40	-	-	-	-
M-PS 302 X(D)K	20.0	11.0	0-16	0-40	0-40	-	-	-
M-PS 302 X(D)L	25.0	13.0	0-16	0-40	0-40	-	-	-
M-PS 302 X(D)M	32.0	24.0	-	0-25	0-40	0-40	-	-
M-PS 302 X(D)N	40.0	27.0	-	0-25	0-40	0-40	-	-
M-PS 302 X(D)O	50.0	42.0	-	0-6	0-16	0-40	-	-
M-PS 302 X(D)P	65.0	75.0	-	-	0-16	0-40	-	-
M-PS 302 X(D)Q	80.0	97.0	-	-	0-16	0-25	0-40	-
M-PS 302 X(D)R	100.0	143.0	-	-	-	0-25	0-40	-
M-PS 302 X(D)S	125.0	240.0	-	-	-	0-16	0-40	-
M-PS 302 X(D)T	150.0	370.0	-	-	-	-	0-16	0-40
M-PS 302 X(D)U	200.0	625.0	-	-	-	-	0-8	0-16
M-PS 302 X(D)V	250.0	950.0	-	-	-	-	-	0-16
M-PS 302 X(D)W	300.0	1400	-	-	-	-	-	0-16

Max. pressure for EN-GJL-250 housing with PN16 is 16 bar

Standard NC type	Seat ø mm	Kv-value m ³ /h	max. pressure ATEX				
			E05	E06	E07	E08	E09
M-PS 302 X(D)J	15.0	5.0	0-30	0-40	-	-	-
M-PS 302 X(D)K	20.0	11.0	0-16	0-25	0-40	-	-
M-PS 302 X(D)L	25.0	13.0	0-16	0-25	0-40	-	-
M-PS 302 X(D)M	32.0	24.0	-	0-16	0-25	0-40	-
M-PS 302 X(D)N	40.0	27.0	-	0-16	0-25	0-40	-
M-PS 302 X(D)O	50.0	42.0	-	-	0-10	0-25	0-40
M-PS 302 X(D)P	65.0	75.0	-	-	0-4	0-25	0-40
M-PS 302 X(D)Q	80.0	97.0	-	-	0-2	0-16	0-40
M-PS 302 X(D)R	100.0	143.0	-	-	-	0-16	0-40
M-PS 302 X(D)S	125.0	240.0	-	-	-	0-8	0-16
M-PS 302 X(D)T	150.0	370.0	-	-	-	-	0-10
M-PS 302 X(D)U	200.0	625.0	-	-	-	-	0-4
M-PS 302 X(D)V	250.0	950.0	-	-	-	-	0-1
M-PS 302 X(D)W	300.0	1400	-	-	-	-	-

Max. pressure for EN-GJL-250 housing with PN16 is 16 bar





Coil Type	A05 / E05			A06 / E06					
	M-PS 302			M-PS 302					
	?J	?K	?L	?J	?K	?L	?M	?N	?O
DN	15	20	25	15	20	25	32	40	50
C	66	66	66	76	76	76	76	76	76
K	104	128	128	156	156	165	165	181	181
L	130	150	160	130	150	160	180	200	230
kg	5.0	5.5	6.0	5.0	5.5	6.0	7.5	7.5	9.5

Differing dimensions „C“ for ATEX-coils

Coil Type	A07 / E07							A08 / E08							
	M-PS 302							M-PS 302							
	?K	?L	?M	?N	?O	?P	?Q	?M	?N	?O	?P	?Q			
DN	20	25	32	40	50	65	80	32	40	50	65	80	100	125	150
C	93	93	93	93	93	93	93	105	105	105	107	107	107	107	107
K	175	184	184	200	200	270	315	250	250	260	310	345	400	355	359
L	150	160	180	200	230	290	310	180	200	230	290	310	350	400	480
kg	5.0	6.5	8.5	9.0	11.5	35.0	44.0	10.5	11.0	13.5	38.0	47.0	63.0	80.0	87.0

Coil Type	A09 / E09					A10			
	M-PS 302					M-PS 302			
	?Q	?R	?S	?T	?U	?T	?U	?V	?W
DN	80	100	125	150	200	150	200	250	300
C	120	120	120	127	127	158	158	158	158
K	480	560	420	600	660	600	660	720	750
L	310	350	400	480	600	480	600	730	850
kg	39.0	60.0	87.0	95.0	108.0	140.0	158.0	235.0	320.0

- The GVT logo is a registered trademark.
- Note: All texts and images are the property of GVT and must not be replicated or modified, not even in part, without written approval.
- Original products may differ from the product images shown, due to different materials and the like.
- Subject to error and changes.