



Technical Data Sheet M-HD 103

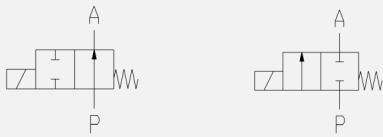



3/2-way solenoid valve - universal design (UN)

Solenoid valve for high pressure applications

- For high pressure applications up to 250 bar
- No pressure difference necessary
- High life time
- Reliable and sturdy sealing elements
- Long-term availability of spare parts
- High-quality materials

TECHNICAL SPECIFICATIONS

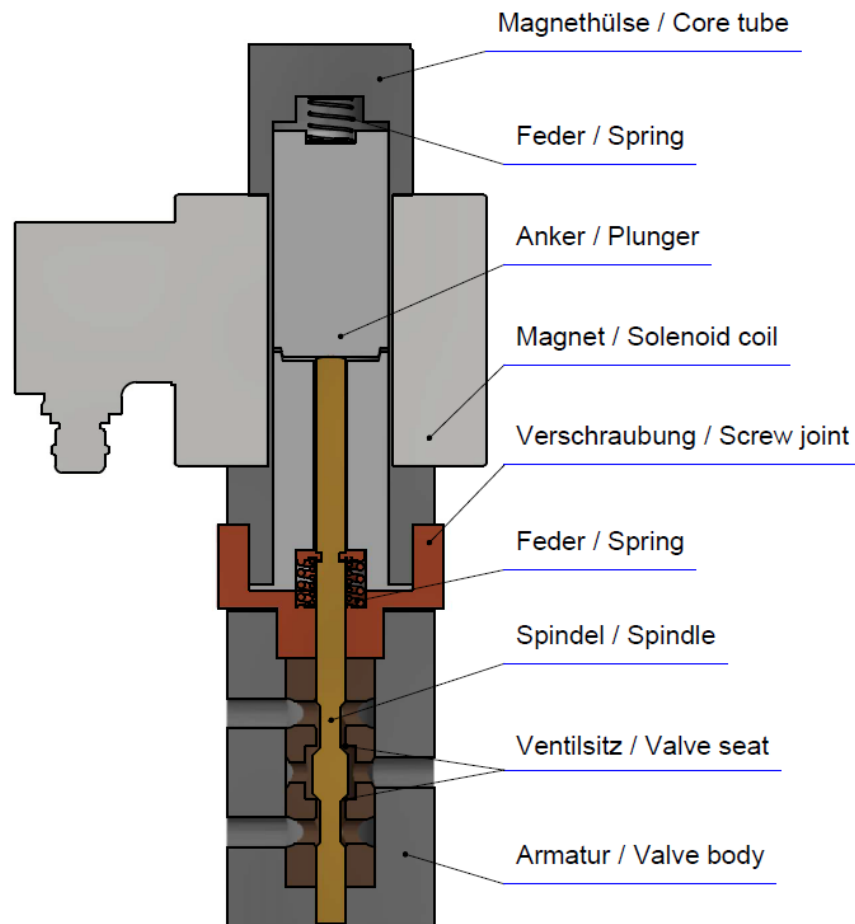
Type of control:	Direct operated no pressure difference necessary	Supply voltage:	AC 50/60Hz 24V, 110V, 230V DC 0Hz 12V, 24V
Design:	Poppet design	Voltage tolerance:	-10% / +10%
Connection:	Threaded G 1/8 - G 1/2 DIN ISO 228 (BSP) <i>Further connections on request</i>	Consumption:	A08 = 100 Watt E08 = 47 Watt A09 = 1150 Watt E09 = 75 Watt
Installation:	Actuator upright	Protection class:	IP 65 acc. to DIN 60529
Pressure:	0 - 250 bar (see table page 2)	Duty factor:	100% ED - VDE 0580
Medium:	Clean, neutral, liquid or gaseous	Connection type:	Terminal box
Viscosity:	22 mm ² /s	Function:	NC NO
Temperature range:	Medium: -10 °C up to +80 °C Ambient: -10 °C up to +50 °C		
Body material	Stainless steel 1.4571 (AISI 316Ti)	Certificates:	
Metallic inner parts:	Brass and stainless steel	Ex-proof:	acc. to directive 2014/34/EG (ATEX)
Sealing:	PEEK		

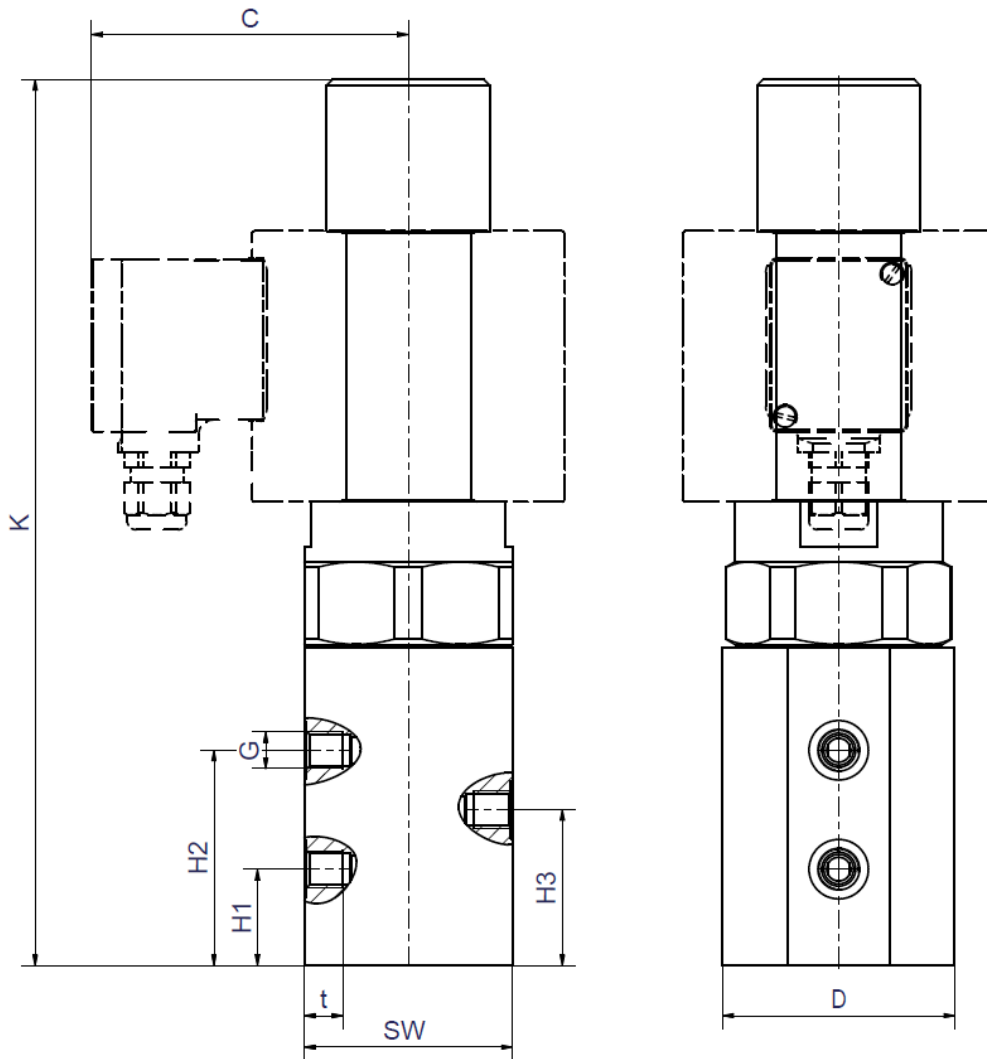
ORDERING SYSTEM

M-HD	1	03	G	D	10.0	C	E	A08	
Type	Control type	Code	Connection type	Connection size	Nominal diameter mm	Body material	Sealing material	Actuator type	Option
	1 direct operated		G BSP N NPT	A 1/8 B 1/4 C 3/8 D 1/2		C AISI316	E PEEK	A standard E ex.-proof	

Standard NC type	Seat \varnothing mm	Kv-value m ³ /h	max. pressure		max. pressure ATEX	
			A08	A09	E08	E09
M-HD 103 GA	10.0	1.2	0-200	0-250	0-150	0-210
M-HD 103 GB	10.0	1.2	0-200	0-250	0-150	0-210
M-HD 103 GC	10.0	1.2	0-200	0-250	0-150	0-210
M-HD 103 GD	10.0	1.2	0-200	0-250	0-150	0-210

Valve design





Coil	A08 / E08				A09 / E09			
	M-HD 103				M-HD 103			
Type	GA	GB	GC	GD	GA	GB	GC	GD
G	1/8	1/4	3/8	1/2	1/8	1/4	3/8	1/2
C	107	107	107	107	127	127	127	127
K	299	299	299	299	332	332	332	332
D	78	78	78	78	78	78	78	78
SW	70	70	70	70	70	70	70	70
H1	32.5	32.5	32.5	32.5	32.5	32.5	32.5	32.5
H2	72.5	72.5	72.5	72.5	72.5	72.5	72.5	72.5
H3	52.5	52.5	52.5	52.5	52.5	52.5	52.5	52.5
t	12.5	12.5	12.5	12.5	12.5	12.5	12.5	12.5
kg	10.9	11.3	11.2	10.8	22.6	22.6	22.6	22.5

- The GVT logo is a registered trademark.
- Note: All texts and images are the property of GVT and must not be replicated or modified, not even in part, without written approval.
- Original products may differ from the product images shown, due to different materials and the like.
- Subject to error and changes.