



Technical Data Sheet P-PS 101



- 2/2-Way pressure controlled valve - valve normally closed (NC)
- valve normally open (NO)
- double acting actuator (DW)

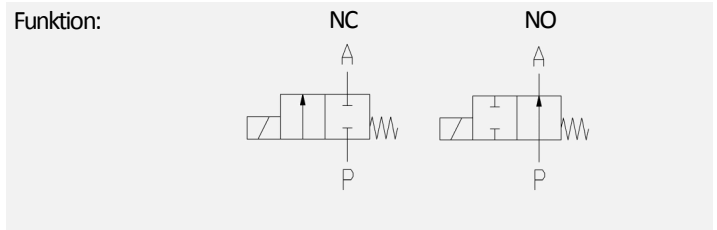
Pressure controlled valve for neutral gaseous and liquid media

- For general purposes
- No pressure difference necessary
- High life time
- Reliable and sturdy sealing elements
- Long-term availability of spare parts
- High-quality materials

TECHNICAL SPECIFICATIONS

Type of control:	Direct acting, pressure controlled
Design:	Poppet design
Connection:	Threaded G 1/2 - G 3 DIN ISO 228 (BSP) Further connections like NPT on request
Installation:	Actuator preferable upright
Pressure:	0-40 bar (see table page 2)
Medium:	Clean, neutral, gaseous and liquid
Viscosity:	600 mm ² /s
Temperature range:	Medium: -40 °C up to +200 °C Ambient: -10 °C up to +60 °C
Body material	Red brass RG5 Stainless steel 1.4408 (AISI 316L)
Metallic inner parts:	Brass and Stainless steel
Sealing:	NBR, FKM, PTFE, EPDM
Pilot pressure:	6-10 bar
Pilot medium:	clean and neutral gases

Supply voltage:	-
Voltage tolerance:	-
Consumption:	-
Protection class:	-
Duty factor:	-
Connection type:	-



Certificates:



Ex-proof:	optional with mech. ATEX
-----------	--------------------------

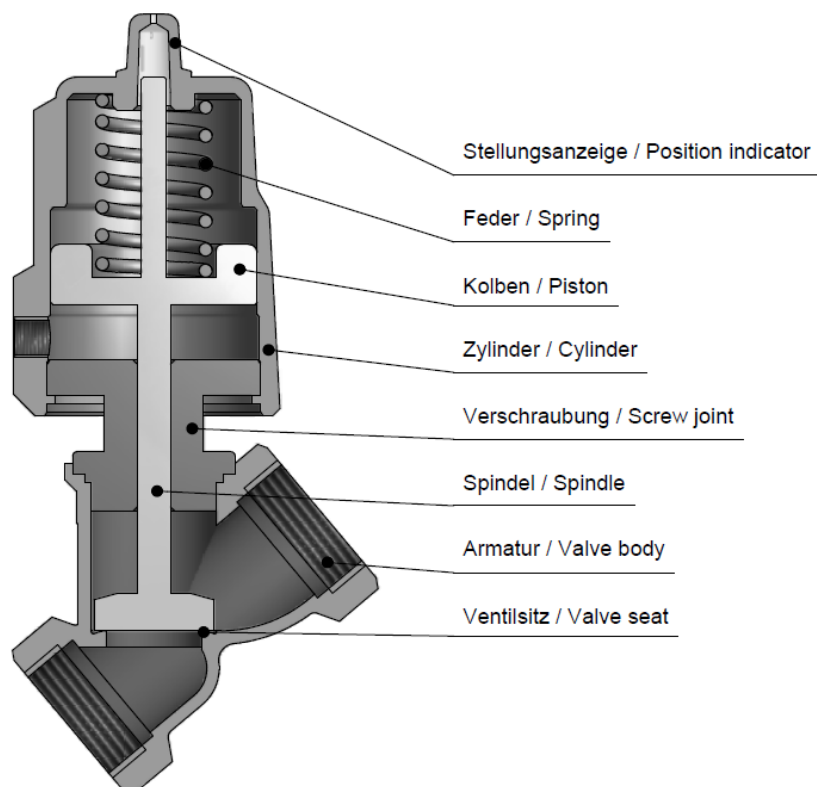
ORDERING SYSTEM

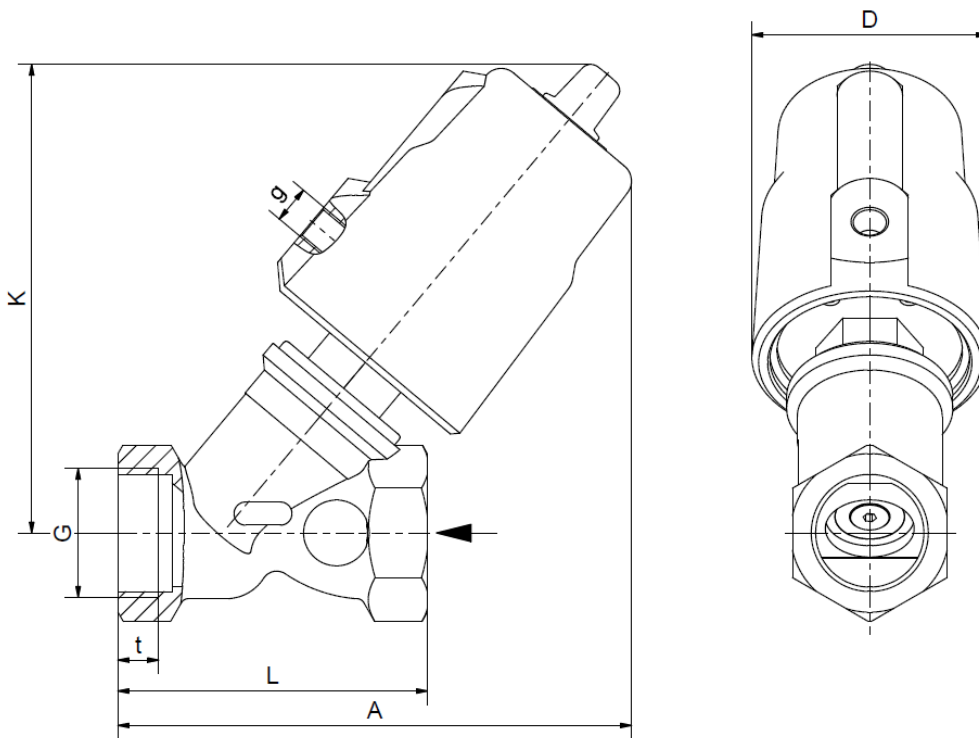
P-PS	1	01	G	D	13.5	H	A	P05	NO
Type	Control type	Code	Connection type	Connection size	Nominal diameter mm	Body material	Sealing material	Actuator type	Option
	1 direct acting		G BSP N NPT	D 1/2 E 3/4 F 1 G 1 1/4 H 1 1/2 I 2 P 2 1/2 Q 3		D AISI316L H Red brass	A NBR B FKM C EPDM D PTFE	05 50 mm 08 80 mm 13 125 mm	

Standard NC type	Seat ϕ mm	Kv-value m ³ /h	max. pressure with actuator					
			P05		P08		P13	
			RG5	AISI316	RG5	AISI316	RG5	AISI316
P-PS 101 GD	13	4.6	0-16	0-40	-	-	-	-
P-PS 101 GE	18	6.4	0-16	0-20	-	0-40	-	-
P-PS 101 GF	24	8.4	0-16	0-16	0-16	0-25	-	0-40
P-PS 101 GG	31	21.5	0-10	0-10	0-16	0-25	-	0-40
P-PS 101 GH	35	27.0	0-8	0-8	0-16	0-20	0-16	0-40
P-PS 101 GI	45	45.0	0-4	0-4	0-12	0-12	0-16	0-20
P-PS 101 GP	63	82.0	-	-	0-6	0-6	0-10	0-10
P-PS 101 GQ	75	125.0	-	-	0-4	0-4	0-10	0-10

Standard NC type	Seat ϕ mm	Kv-value m ³ /h	max. pressure for closing against media design					
			P05		P08		P13	
			RG5	AISI316	RG5	AISI316	RG5	AISI316
P-PS 101 GD	13	4.6	0-16	0-40	-	-	-	-
P-PS 101 GE	18	6.4	0-16	0-20	-	0-40	-	-
P-PS 101 GF	24	8.4	0-10	0-10	0-16	0-22	-	0-40
P-PS 101 GG	31	21.5	0-7	0-7	0-10	0-10	0-16	0-40
P-PS 101 GH	35	27.0	0-6	0-6	0-8	0-8	0-16	0-30
P-PS 101 GI	45	45.0	0-3	0-3	0-5	0-5	0-16	0-20
P-PS 101 GP	63	82.0	-	-	0-1	0-1	0-8.5	0-8.5
P-PS 101 GQ	75	125.0	-	-	0-0.7	0-0.7	0-5	0-5

Valve design





Actuator Type	P05						P08		
	P-HD 101						P-HD 101		
	GD	GE	GF	GG	GH	GI	GF	GF	GG
G	1/2	3/4	1	1 1/4	1 1/2	2	3/4	1	1 1/4
A	123	130	133	153	162	171	174	175	185
D	62	62	62	62	62	62	62	62	94
K	113	118	122	139	146	155	170	168	174
L	66	75	80	97	107	124	75	80	97
g	1/8	1/8	1/8	1/8	1/8	1/8	1/8	1/8	1/8
t	13	14.5	10.5	12.5	14.5	16.5	13	10.5	12.5
kg	1.3	1.4	1.5	2.0	2.3	3.0	1.6	1.8	2.2

Actuator Type	P08				P13					
	P-HD 101				P-HD 101					
	GH	GI	GP	GQ	GF	GG	GH	GI	GP	GQ
G	1 1/2	2	2 1/2	3	1	1 1/4	1 1/2	2	2 1/2	3
A	192	203	247	265	240	250	255	261	307	325
D	94	94	94	94	140	140	140	140	140	140
K	181	190	205	211	239	245	250	254	267	273
L	107	124	178	195	90	110	107	124	178	185
g	1/8	1/8	1/5	1/8	1/4	1/4	1/4	1/4	1/4	1/4
t	14.5	16.5	28	28	15	17	14.5	16.5	28	28
kg	2.5	3.3	5.5	7.0	4.5	4.8	4.5	5.0	7.4	9.0

- The **GVT** logo is a registered trademark.
- Note: All texts and images are the property of **GVT** and must not be replicated or modified, not even in part, without written approval.
- Original products may differ from the product images shown, due to different materials and the like.
- Subject to error and changes.