



Technical Data Sheet M-HD 101

GVT.

2/2-way solenoid valve - valve normally closed (NC)
- valve normally open (NO)

Solenoid valve for high pressure applications

- For high pressure **up to 900 bar (90 MPa)**
- No pressure difference necessary
- High life time
- Reliable and sturdy sealing elements
- Long-term availability of spare parts
- High-quality materials

TECHNICAL SPECIFICATIONS

Type of control:	Direct operated, no pressure difference necessary	Supply voltage:	AC 50/60Hz 24V, 110V, 230V DC 0Hz 12V, 24V
Design:	Piston design	Voltage tolerance:	-10% / +10%
Connection:	Threaded G 1/4 DIN ISO 228 (BSP) <i>Further connections on request</i>	Consumption:	A02 = 11 Watt E02 = 10 Watt A03 = 18 Watt A04 = 25 Watt A05 = 24 Watt E05 = 24 Watt A06 = 30 Watt E06 = 24 Watt A07 = 46 Watt E07 = 30 Watt
Installation:	Actuator preferable upright	Protection class:	IP 65 acc. to DIN 60529
Pressure:	0 - 900 bar (see table page 2)	Duty factor:	100% ED - VDE 0580
Medium:	Clean, neutral, liquid or gaseous	Connection type:	Plug / Terminal box
Viscosity:	22 mm ² /s	Function:	NC NO
Temperature range:	Medium: -40 °C up to +80 °C Ambient: -40 °C up to +50 °C	Certificates:	
Body material	Brass 2.0402 Stainless steel 1.4301 (AISI 303) Stainless steel 1.4462 (AISI UNS 31803) Stainless steel 1.4571 (AISI 316Ti)	Ex-proof:	acc. to directive 2014/34/EG (ATEX)
Metallic inner parts:	Brass and stainless steel		
Sealing:	PTFE, PEEK, PCTFE, XHPU		

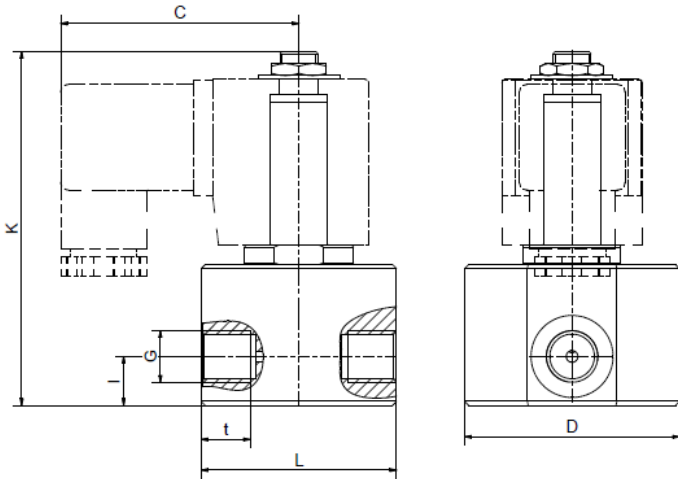
ORDERING SYSTEM

M-HD	1	01	G	B	0.7	C	E	A03	NO
Type	Control type	Code	Connection type	Connection size	Nominal diameter mm	Body material	Sealing material	Actuator type	Option
	1 direct operated		G BSP N NPT	B 1/4		A Brass B AISI303 C AISI316	D PTFE E PEEK H XHPU	A standard E ex.-proof	

Technical Features || Dimensions

[with coils A02 || A03 || E02]

Seat mm	Kv-value m ³ /h	Standard type	max. pressure for coils					
			A02		A03		A03 (ATEX)	
			NC	NO	NC	NO	NC	NO
0,5	0,015	M-HD 101 GB0.5BE	0-300	0-300	-	-	0-250	0-250
0,7	0,02	M-HD 101 GB0.7BE	0-210	0-210	0-500	0-500	0-170	0-170
0,8	0,025	M-HD 101 GB0.8AD(BE)	0-170	-	0-250	0-250	0-170	0-170
1,0	0,06	M-HD 101 GB1.0AD(BE)	-	-	0-200	0-200	-	-

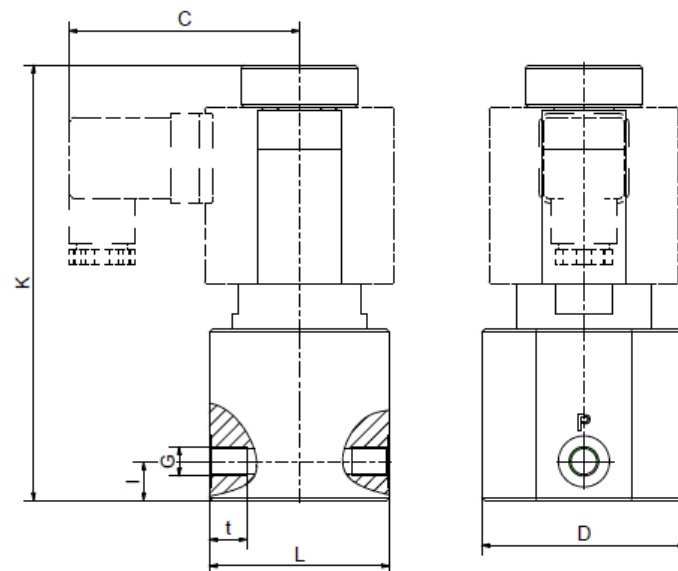


Coil	A02	A03 / E02*
G	1/4	1/4
C	59	61
D	68	68
K	90,5	90,5
I	12,5	12,5
L	60	60
t	12,5	12,5
kg	0,9	0,9

* Different dimension „C“ for ATEX coils

[with coils A05 || E05]

Seat mm	Kv-value m ³ /h	Standard type	max. pressure for coils	
			A05	E05 (ATEX)
			NC	NC
0,5	0,015	.M-HD 101 GB0.5CE	0-900	0-900
0,7	0,02	.M-HD 101 GB0.7CE	0-600	0-500
0,8	0,025	.M-HD 101 GB0.8CE	0-450	0-350



Coil	A05 / E05*
G	1/4
C	70
D	68
K	122
I	12,5
L	60
t	12,5
kg	1,9

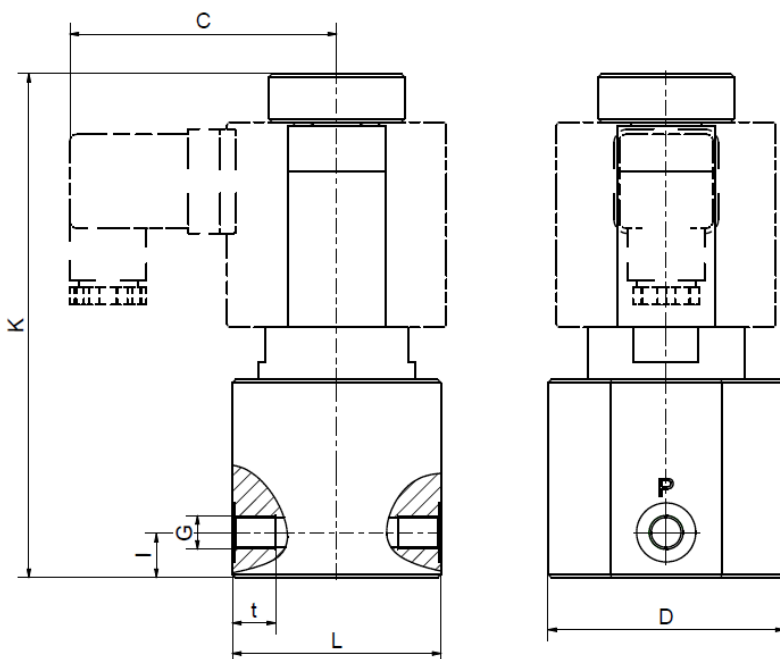
* Different dimension „C“ for ATEX coils

Technical Features || Dimensions

[with coils A04 || A05 || A06 || A07]
 [with coils acc. to ATEX E05 || E06 || E07]

Brass			max. pressure for coils													
Seat mm	Kv-value m ³ /h	Standard type	A04		A05		E05 (ATEX)		A06		E06(ATEX)		A07		E07 (ATEX)	
			NC	NO	NC	NO	NC	NO	NC	NO	NC	NO	NC	NO	NC	NO
1,0	0,06	M-HD 101 GB1.0AD	-	-	0-200	0-100	0-200	0-100	0-200	0-200	-	-	-	-	-	-
1,5	0,09	M-HD 101 GB1.5AD	0-100	0-80	0-140	0-80	0-140	0-80	0-200	0-180	0-120	0-80	-	-	-	-
2,0	0,13	M-HD 101 GB2.0AD	0-80	0-40	0-100	0-50	0-100	0-50	0-180	0-160	0-90	0-70	0-200	0-200	0-200	0-200
2,5	0,16	M-HD 101 GB2.5AD	0-50	0-28	0-50	0-40	0-50	0-40	0-110	0-110	0-60	0-60	0-200	0-180	0-200	0-100
3,0	0,2	M-HD 101 GB3.0AD	0-35	0-20	0-40	0-25	0-40	0-25	0-80	0-100	0-40	0-40	0-150	0-120	0-150	0-70
4,0	0,35	M-HD 101 GB4.0AD	0-16	0-12	0-25	0-15	0-25	0-15	0-40	0-35	0-25	0-25	0-100	0-60	0-80	0-60
5,0	0,5	M-HD 101 GB5.0AD	0-12	0-6	0-16	0-9	0-16	0-9	0-28	0-20	0-12	0-12	0-60	0-40	0-40	0-30
6,0	0,75	M-HD 101 GB6.0AD	0-10	0-4	0-12	0-6	0-10	0-6	0-20	0-14	0-10	0-10	0-45	0-30	0-25	0-20

Stainless steel			max. pressure for coils													
Seat mm	Kv-value m ³ /h	Standard type	A04		A05		E05 (ATEX)		A06		E06 (ATEX)		A07		E07 (ATEX)	
			NC	NO	NC	NO	NC	NO	NC	NO	NC	NO	NC	NO	NC	NO
1,0	0,06	M-HD 101 GB1.0B	-	-	0-350	0-100	0-200	0-100	0-350	0-350	0-300	0-200	0-450	0-400	0-450	0-350
1,5	0,09	M-HD 101 GB1.5B	0-100	0-80	0-140	0-80	0-140	0-80	0-330	0-180	0-120	0-80	0-410	0-300	0-320	0-250
2,0	0,13	M-HD 101 GB2.0B	0-80	0-40	0-100	0-50	0-100	0-50	0-180	0-160	0-90	0-70	0-300	0-200	0-250	0-200
2,5	0,16	M-HD 101 GB2.5BD	0-50	0-28	0-50	0-40	0-50	0-40	0-110	0-110	0-60	0-60	0-200	0-180	0-200	0-100
3,0	0,2	M-HD 101 GB3.0BD	0-35	0-20	0-40	0-25	0-40	0-25	0-80	0-100	0-40	0-40	0-150	0-120	0-150	0-70
4,0	0,35	M-HD 101 GB4.0BD	0-16	0-12	0-25	0-15	0-25	0-15	0-40	0-35	0-25	0-25	0-100	0-60	0-80	0-60
5,0	0,5	M-HD 101 GB5.0BD	0-12	0-6	0-16	0-9	0-16	0-9	0-28	0-20	0-12	0-12	0-60	0-40	0-40	0-30
6,0	0,75	M-HD 101 GB6.0BD	0-10	0-4	0-12	0-6	0-10	0-6	0-20	0-14	0-10	0-10	0-45	0-30	0-25	0-20



Coil	A04	A05 / E05*	A06 / E06	A07 / E07
G	1/4	1/4	1/4	1/4
C	67	70	77	92,5
D	68	68	68	68
K	109	113	145	166
l	12,5	12,5	13	13
L	60	60	60	60
t	12,5	12,5	12,5	12,5
kg	1,9	2,0	3,0	4,4

* Different dimension „C“ for ATEX coils

- The GVT logo is a registered trademark.
- Note: All texts and images are the property of GVT and must not be replicated or modified, not even in part, without written approval.
- Original products may differ from the product images shown, due to different materials and the like.
- Subject to error and changes.