

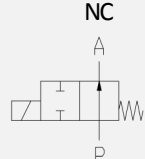
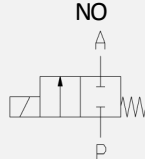



2/2-way solenoid valve - valve normally closed (NC)
- valve normally open (NO)

Solenoid valve for high temperature applications

- For high temperature applications +180°C
- Pressure difference is required
- High life time
- Reliable and sturdy sealing elements
- Long-term availability of spare parts
- High-quality materials

TECHNICAL SPECIFICATIONS

Type of control:	Pilot operated, pressure difference is required	Supply voltage:	AC 50/60Hz 24V, 110V, 230V DC 0Hz 12V, 24V
Design:	Piston design	Voltage tolerance:	-10% / +10%
Connection:	Flanged acc. to EN 1092-1 Form B1/B2 <i>Further connections on request</i>	Consumption:	T01 = 6.8 Watt T03 = 18 Watt T05 = 18 Watt T07 = 26 Watt
Installation:	Actuator preferable upright	Protection class:	IP 65 acc. to DIN 60529
Pressure:	0.5 - 40 bar (see table page 2)	Duty factor:	100% ED - VDE 0580
Medium:	Clean, neutral, liquid or gaseous	Connection type:	Plug
Viscosity:	22 mm ² /s	Funktion:	<div style="display: flex; justify-content: space-around;"> <div style="text-align: center;"> <p>NC</p>  </div> <div style="text-align: center;"> <p>NO</p>  </div> </div>
Temperature range:	Medium: -20 °C up to +180 °C Ambient: -20 °C up to +50 °C	Certificates:	
Body material	Cast iron EN-GJL-250 Cast steel GP240 GH Stainless steel 1.4581 (AISI 316Ti)	Ex-proof:	-
Metallic inner parts:	Brass and stainless steel		
Sealing:	PTFE		

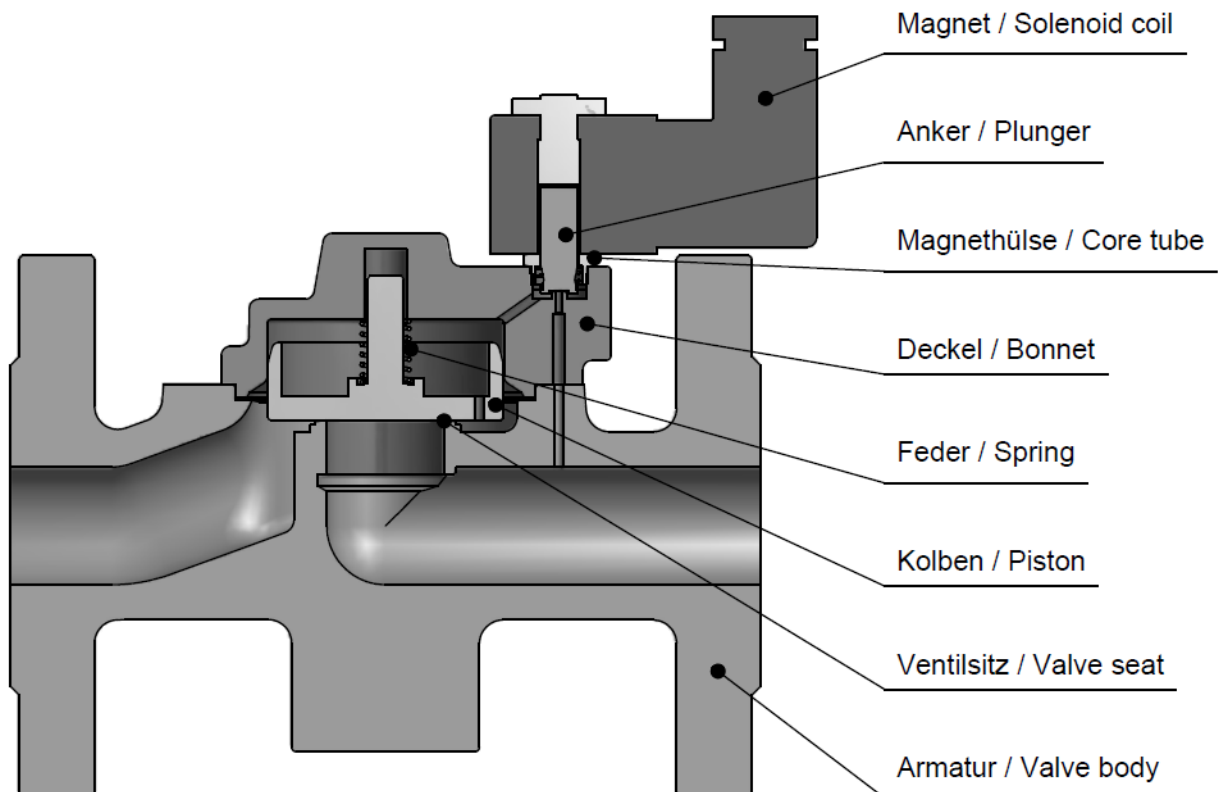
ORDERING SYSTEM

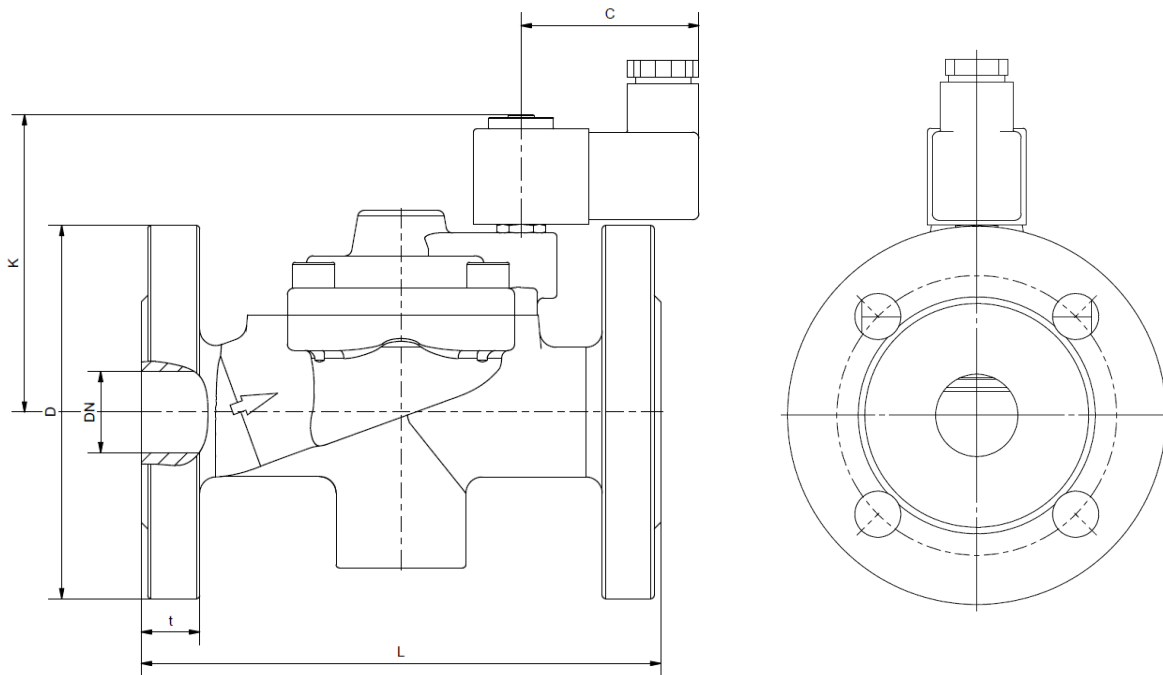
M-ET	2	02	D	L	25.0	E	D	T03
Type	Control type	Code	Connection type	Connection size	Nominal diameter mm	Body material	Sealing material	Actuator type
	2 pilot operated		D PN16 X PN40 A ANSI150 Y ANSI300	J DN15 K DN20 L DN25 M DN32 N DN40 O DN50 P DN65 Q DN80 R DN100 S DN125 T DN150		C AISI316 E EN-GJL-250 F GP240 GH	D PTFE	T +180 °C

Standard NC type	Seat \varnothing mm	Kv-value m ³ /h	max. pressure				
			T01	T03	T03-NO	T05	T07
M-ET 202 X(D)J	15.0	5.0	0.5-16	0.5-40	0.5-40	-	-
M-ET 202 X(D)K	20.0	11.0	0.5-16	0.5-40	0.5-40	-	-
M-ET 202 X(D)L	25.0	13.0	0.5-16	0.5-40	0.5-40	-	-
M-ET 202 X(D)M	32.0	28.0	-	0.5-25	0.5-16	-	-
M-ET 202 X(D)N	40.0	30.0	-	0.5-25	0.5-16	-	-
M-ET 202 X(D)O	50.0	46.0	-	0.5-25	0.5-16	-	-
M-ET 202 DP	65.0	75.0	-	-	-	1-13	-
M-ET 202 DQ	80.0	97.0	-	-	-	1-13	-
M-ET 202 DR	100.0	143.0	-	-	-	1-13	-
M-ET 202 DS	125.0	240.0	-	-	-	-	2-10
M-ET 202 DT	150.0	370.0	-	-	-	-	2-10

Max. pressure for EN-GJL-250 housing with PN16 is 16 bar

Valve design





Coil	T01			T03					
	M-ET 202 ?J	M-ET 202 ?K	M-ET 202 ?L	M-ET 202 ?J	M-ET 202 ?K	M-ET 202 ?L	M-ET 202 ?M	M-ET 202 ?N	M-ET 202 ?O
Type									
DN	15	20	25	15	20	25	32	40	50
C	55	55	55	59	59	59	59	59	59
K	80	92	92	91	106	106	139	139	152
L	130	150	160	130	150	160	180	200	230
kg	2.5	3.6	4.2	2.5	3.6	4.2	7.0	7.5	10.5

Coil	T05			T07	
	M-ET 202 DP	M-ET 202 DQ	M-ET 202 DR	M-ET 202 DS	M-ET 202 DT
Type					
DN	65	80	100	128	150
C	215	250	270	235	265
K	205	225	262	355	360
L	290	310	350	400	480
kg	27.5	38.4	42.6	54.7	75.1

- The GVT logo is a registered trademark.
- Note: All texts and images are the property of GVT and must not be replicated or modified, not even in part, without written approval.
- Original products may differ from the product images shown, due to different materials and the like.
- Subject to error and changes.