



Technical Data Sheet P-PS 103



- 3/2-Way pressure controlled valve - valve normally closed (NC)
- valve normally open (NO)
- double acting actuator (DW)

Pressure controlled valve for neutral gaseous and liquid media

- For general purposes
- No pressure difference necessary
- High life time
- Reliable and sturdy sealing elements
- Long-term availability of spare parts
- High-quality materials

TECHNICAL SPECIFICATIONS

Type of control:	Direct acting, pressure controlled	Supply voltage:	-
Design:	Poppet design	Voltage tolerance:	-
Connection:	Threaded G 1/2 - G 2 DIN ISO 228 (BSP)	Consumption:	-
Installation:	Preferable with actuator upright	Protection class:	-
Pressure:	0-40 bar (see table page 2)	Duty factor:	-
Medium:	Clean, neutral, gaseous and liquid	Connection type:	-
Viscosity:	600 mm ² /s	Funktion:	NC NO DW
Temperature range:	Medium: -40 °C up to +200 °C Ambient: -10 °C up to +60 °C		
Body material	Red brass RG5 Stainless steel 1.4571 (only G1/2) Stainless steel 1.4408	Certificates:	
Metallic inner parts:	Brass and Stainless steel	Ex-proof:	optional with mech. ATEX
Sealing:	PTFE		
Pilot pressure:	6-10 bar		
Pilot medium:	clean and neutral gases		

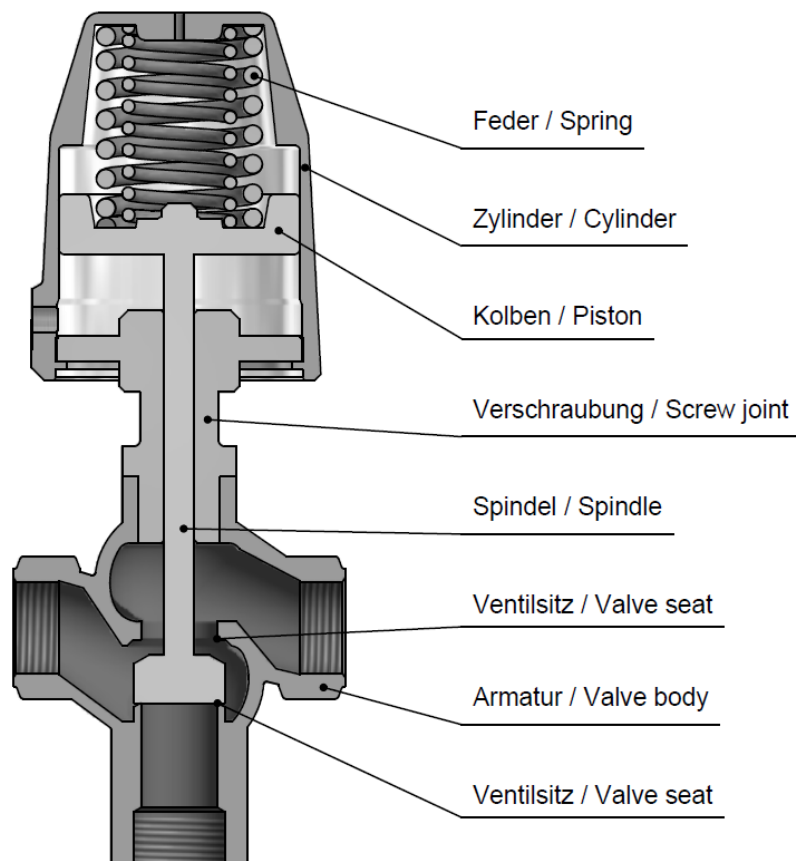
ORDERING SYSTEM

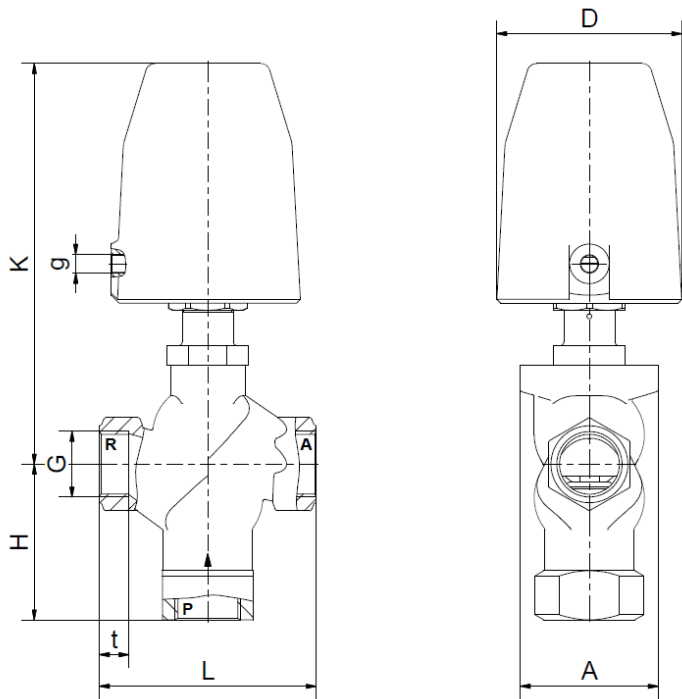
P-PS	1	03	G	D	15.0	H	D	08
Type	Control type	Code	Connection type	Connection size	Nominal diameter mm	Body material	Sealing material	Actuator type
	1 direct operating		G BSP N NPT	D 1/2 E 3/4 F 1 G 1 1/4 H 1 1/2 I 2		D AISI316L H Red Brass	D PTFE	05 50 mm 08 80 mm 13 125 mm

Standard NC type	Seat ø mm	Kv-value m ³ /h	max. pressure with actuator					
			P05		P08		P13	
			Red brass	St. steel	Red brass	St. steel	Red brass	St. steel
P-PS 103 GD	15	5.0	0-12	0-12	0-16	0-40	-	-
P-PS 103 GE	20	8.3	0-9	0-9	0-16	0-25	-	0-40
P-PS 103 GF	25	14.4	0-5	0-5	0-16	0-16	-	0-40
P-PS 103 GG	32	19.6	-	-	0-8	0-8	0-16	0-16
P-PS 103 GH	40	30.0	-	-	0-5	0-5	0-9	0-9
P-PS 103 GI	50	53.0	-	-	0-2	0-2	0-5	0-5

Standard NC type	Seat ø mm	Kv-value m ³ /h	max. pressure with actuator UN					
			P05		P08		P13	
			Red brass	St. steel	Red brass	St. steel	Red brass	St. steel
P-PS 103 GD	15	5.0	0-8	0-8	0-16	0-40	-	-
P-PS 103 GE	20	8.3	0-6	0-6	0-16	0-25	-	0-40
P-PS 103 GF	25	14.4	0-3	0-3	0-10	0-10	-	0-40
P-PS 103 GG	32	19.6	-	-	0-6	0-6	0-12	0-16
P-PS 103 GH	40	30.0	-	-	0-4	0-4	0-9	0-9
P-PS 103 GI	50	53.0	-	-	0-2	0-2	0-5	0-5

Valve design





Red brass body

Actuator	P05			P08						P13		
Type	P-PS 103			P-PS 103						P-PS 103		
	GD	GE	GF	GD	GE	GF	GG	GH	GI	GG	GH	GI
G	1/2	3/4	1	1/2	3/4	1	1 1/4	1 1/2	2	1 1/4	1 1/2	2
A	75	70	70	75	70	70	70	76	88	70	76	88
D	62	62	62	94	94	94	94	94	94	141	141	141
H	73	70	79	73	70	79	77	81	92	77	81	92
K	150	158	167	196	204	204	209	212	212	322	325	325
L	100	100	110	100	100	110	120	130	150	120	130	150
g	1/8	1/8	1/8	1/8	1/8	1/8	1/8	1/8	1/8	1/4	1/4	1/4
t	13	14	15	13	14	15	15	15	18	15	15	18
kg	2.3	2.4	2.9	2.5	2.6	3.2	3.8	4.5	5.8	6.5	6.9	8.5

Stainless steel body

Actuator	P05			P08						P13		
Type	P-PS 103			P-PS 103						P-PS 103		
	GD	GE	GF	GD	GE	GF	GG	GH	GI	GG	GH	GI
G	1/2	3/4	1	1/2	3/4	1	1 1/4	1 1/2	2	1 1/4	1 1/2	2
A	54	70	70	54	70	70	96	96	112	96	96	112
D	62	62	62	94	94	94	94	94	94	141	141	141
H	33/59	67	69	33/59	67	89	85	85	102	85	85	102
K	177	148	148	223	194	194	202	202	210	296	296	304
L	69	96	96	69	96	96	140	140	168	140	140	168
g	1/8	1/8	1/8	1/8	1/8	1/8	1/8	1/8	1/8	1/4	1/4	1/4
t	14	16	16	14	16	16	22	22	22	22	22	22
kg	3.4	2.5	2.8	3.6	2.7	3.1	4.5	4.2	4.5	7.5	7.3	8.8

- The **GVT** logo is a registered trademark.
- Note: All texts and images are the property of **GVT** and must not be replicated or modified, not even in part, without written approval.
- Original products may differ from the product images shown, due to different materials and the like.
- Subject to error and changes.